

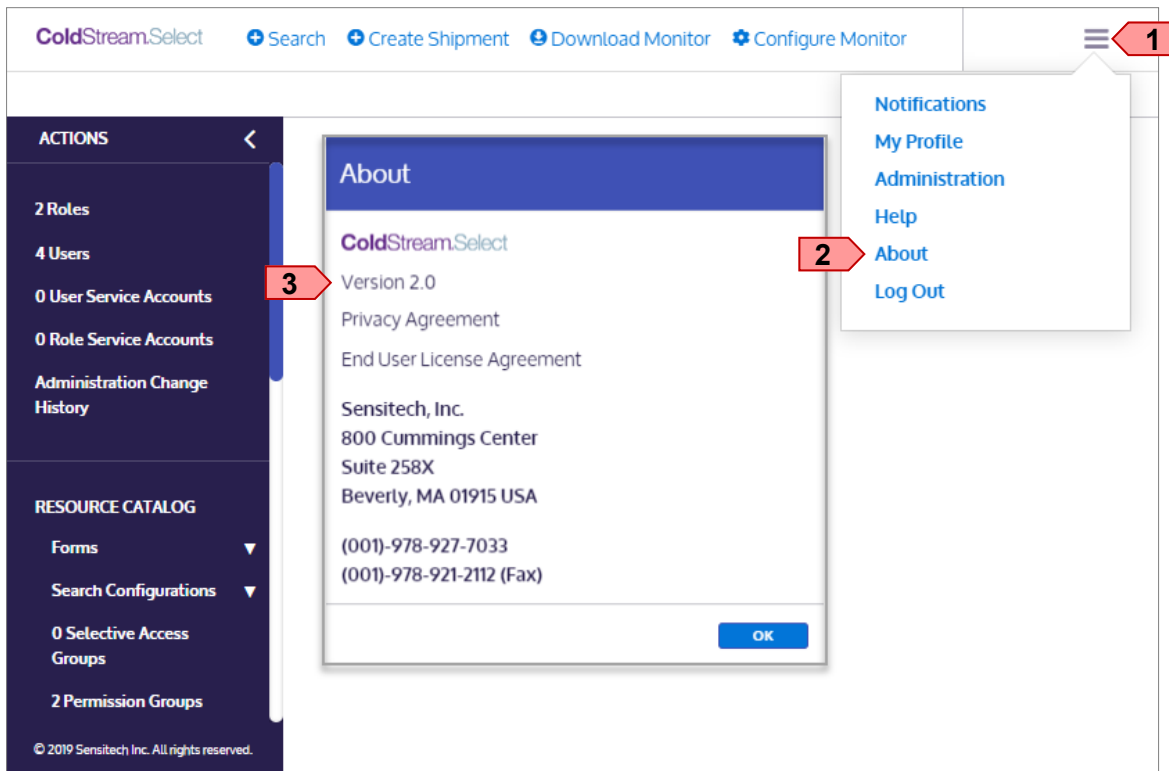
Who Needs To Install The ColdStream Select Tray App?

If your role requires configuring TempTale monitors, install the Tray App.

Note: Administrative rights are required for this task.

Identify Your ColdStream Select Version

Login into ColdStream Select. Click the Menu (1) icon, About (2), the version number (3) is listed directly below ColdStream Select.



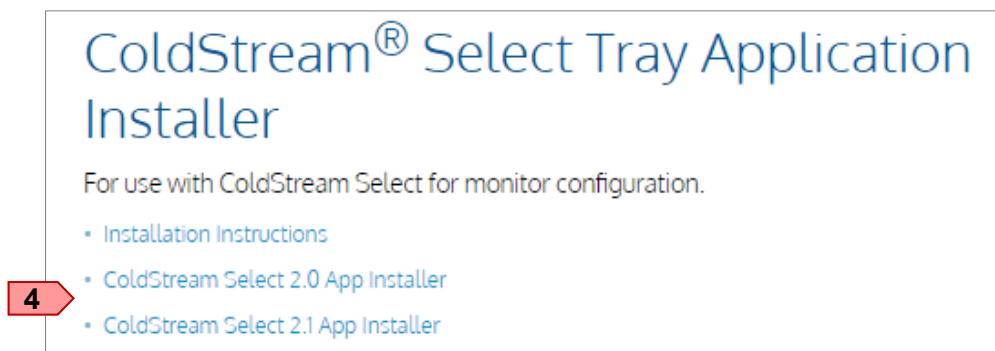
Install The ColdStream Select Tray Application

Click on, or copy and paste into your Internet browser, the following URL:

<http://www.sensitech.com/en/support/downloads/>

Locate and click the **App Installer** that matches the ColdStream Select version number previously identified, either:

ColdStream Select **2.0** App Installer **or** ColdStream Select **2.1** App Installer (4).



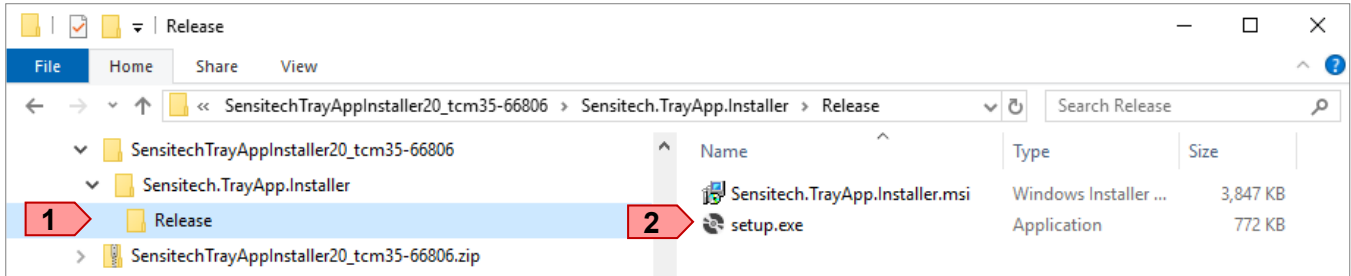
Extract Data Files

Navigate to the Downloads folder and locate the App Installer zip folder, copy it to a location of your choice.

SensitechTrayAppInstaller20_tcm35-66806.zip **or** SensitechTrayAppInstaller21_tcm35-64186.zip.

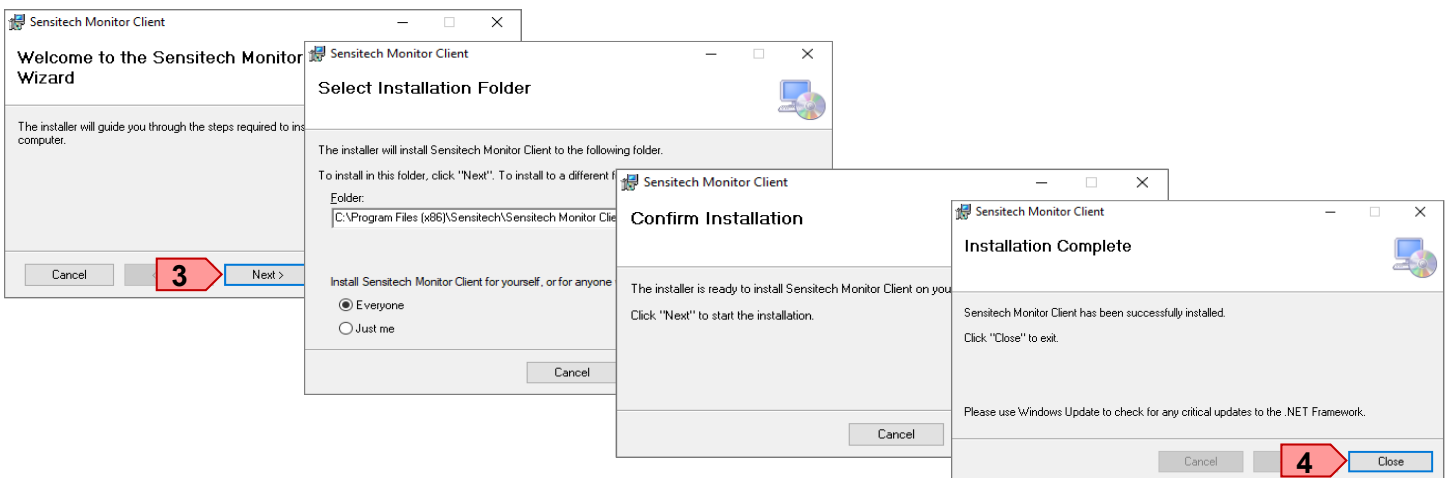
Use your Extraction software to extract the folder contents. Once extracted, locate and double click the folders **(1)** Sensitech.TrayApp.Installer | Release, click setup.exe **(2)**.

Note: Your view may vary depending on the Extraction software used.



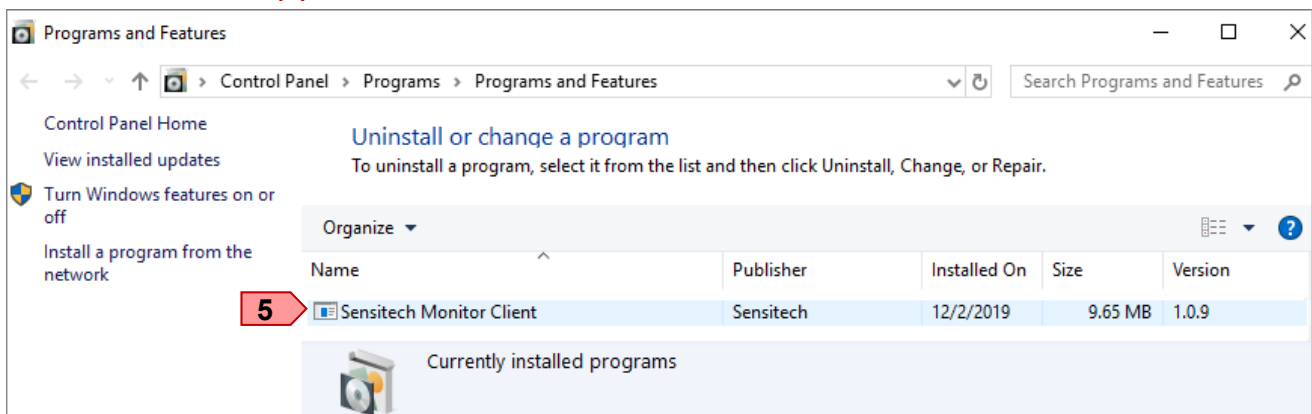
Complete The ColdStream Select Tray Application Installation

Follow the Next **(3)** prompts within the Sensitech Monitor Client to complete the ColdStream Select Tray App installation, click Close **(4)** to complete the installation.



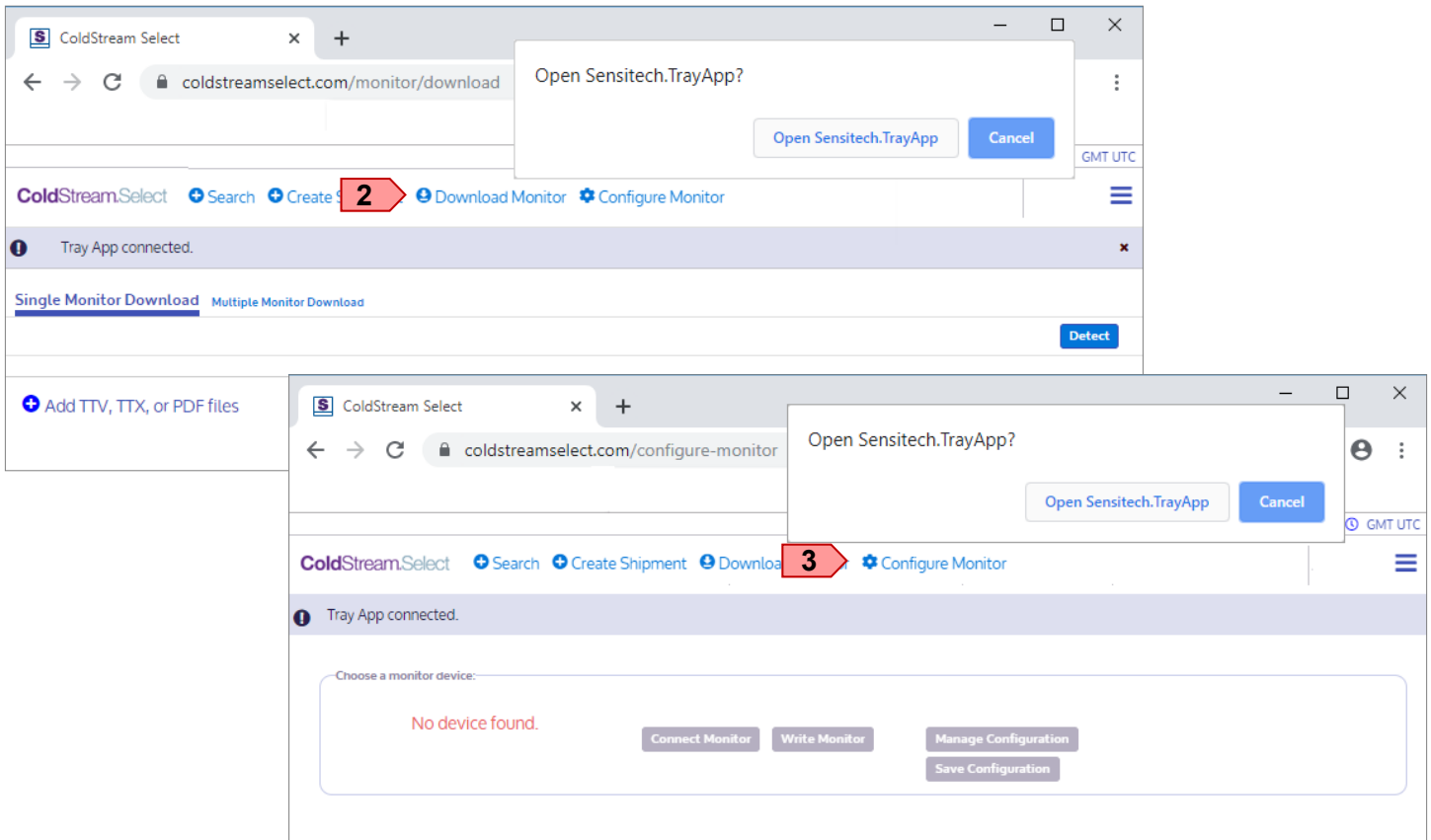
Ok, so I installed the Tray App, where is it?

To verify the ColdStream Select Tray App was installed successfully open the Control Panel and locate the Sensitech Monitor Client **(5)**.



Login To ColdStream Select

From the title bar select Download Monitor (2) or Configure Monitor(3), when prompted, click **Open Sensitech.TrayApp?** to initiate communication between the monitor and ColdStream Select software.



Uninstall The Tray App

Open the Control Panel, locate and click Sensitech Monitor Client (1), click Uninstall (2).

