

ColdStream Site Wireless Network Components

Network Controller: sensors wirelessly communicate data to the network controller which sends data up to the Web Portal via SMTP. AC powered with battery back-up and communicates via Ethernet connection (other options available upon request).

Wireless Repeaters: use to extend the read range of the network—AC powered with battery back-up.

Wireless Sensors: monitor both air and product temperatures designed to simulate probe in glycol/glass beads including, Temperature, Humidity, Cryogenic, and Door Ajar.

Alarm Beacons: visual and audio alerting available in both wireless and wired options.

4-20 mA Wireless Transceiver: add additional sensors to monitor other facility conditions such as O₂, CO₂, Pressure Differential, Light, Water, etc.

Thermal Mapping Consulting Service

A thermal mapping study is a critical step in understanding temperature risks in your storage environment. Use Sensitech's thermal mapping score methodology to determine worst-case positions to justify your permanent monitoring positions to reduce risk and be audit ready.

Dashboard

Site Map

Sensor Graphs

Alert Events

Report Wizard

Documents & Manuals

Configuration

Audit Trail

User Profile

WARNING Sensor has been above the Warning threshold for longer than the delay period

CRITICAL Sensor has been above the Critical threshold for longer than the delay period

MAINTAIN Sensor is in Maintain Mode. No alerts will be generated while the sensor is in this mode

SERVICE Sensor is in Service Mode. After the Service Timeout this sensor will return to Normal. No alerts will be generated while in Service

MISREAD Sensor has recorded a value which the system detects as a bad reading

COMMFAIL Communication with this sensor has failed

Controller in Beverly Office - Cold Room

PS Freezer Humidity 54.1%	PS Fridge Product 24.5°C	PS Freezer Product -15.9°C	PS Fridge Air 24.4°C
PS Freezer Air -16.0°C	PS Fridge -25.0°C	PS Freezer Air -17.2°C	PS Fridge Humidity 49.5%

Controller in Beverly Office - Chamber

TS Freezer Humidity 56.1%	TS Freezer Product -16.7°C	TS Freezer Air -17.0°C	TS Lab 23.6°C
TS Freezer -18.0°C	TS Lab Humidity 57.6%		

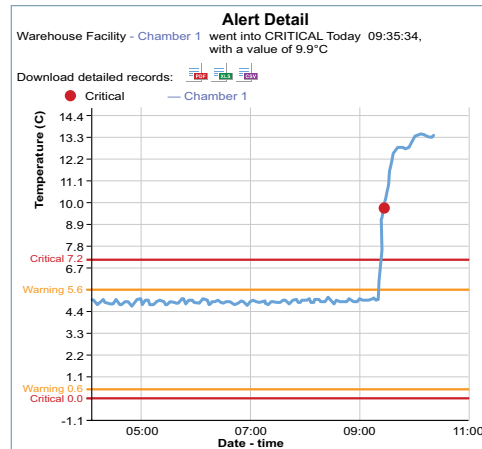
Summary Site Report
From 1 Feb to 2 Feb included

1. Sensor Data Summary

Sensor Name	Min. (°C)	Max. (°C)	Average (°C)	Mean KT (°C)	Standard Deviation	Total Records
Production 1 Air (Beverly)	-15.7	-11.7	-15.4	-15.3	0.6	568
Freezer 1 Air (Beverly)	-17.2	-12.8	-16.5	-16.4	0.7	567

2. Alert Events

Date/Time	Logger	Sensor	Value	Corrective Action
01 Feb 07:15:00	Beverly	MainPower	CRITICAL	
02 Feb 07:15:00	Beverly	PS Freezer 1 Air	CRITICAL	Door ajar + resolved + products OK (created by Cust Supt)



ColdStream Site Solution provides a variety of TempTale Site sensor options (additional sensors upon request).

TempTale Site Wireless Sensor Specifications (by logger type)				
	Temperature	Temperature and Humidity	Cryogenic	Temperature and Door Ajar
Read Range (Line of Sight)	Up to 100 m (328 ft)	Up to 100 m (328 ft)	Up to 100 m (328 ft)	Up to 100 m (328 ft)
Frequency Bands	868 or 915 MHz	868 or 915 MHz	868 or 915 MHz	868 or 915 MHz
Temperature Range	-35°C to +40°C	0°C to +50°C	-200°C to 0°C	-30°C to +40°C
Temperature Accuracy	±0.5°C	±1.0°C [Range 0°C to +5°C] ±0.5°C [Range +5°C to +55°C] ±1.0°C [Range +45°C to +50°C]	±2.0°C [Range 0°C to -100°C] ±5.0°C [Range -100°C to -200°C]	±0.5°C
Temperature Resolution	0.1°C	0.1°C	0.1°C	0.3°C
Humidity Range / Accuracy / Resolution	—	10% to 90%, non-condensing; ±5%; 0.1%RH	—	—
Probe Type	Probed (90 cm cord)/Probeless	Probeless	Probed (3 m cord)	Probeless
Data Storage	5,461 data points	5,461 data points	5,461 data points	5,461 data points
Battery Life/Type	5 year operating life—3.6v lithium non-replaceable	5 year operating life—3.6v lithium non-replaceable	5 year operating life—1.2V NiCd non-replaceable	5 year operating life—3.6v lithium non-replaceable
Configurable Measurement Interval	5 to 100 minutes	5 to 100 minutes	5 to 100 minutes	5 to 100 minutes
Alarm Function	High/Low warning High/Low critical	High/Low warning High/Low critical	High/Low warning High/Low critical	Door open alarm High/Low warning High/Low critical
Typical Dimensions	80 W x 130 H x 30 D (mm) (3.1 W x 5.1 H x 1.2 D (in))	80 W x 130 H x 30 D (mm) (3.1 W x 5.1 H x 1.2 D (in))	148 W x 94 H x 35 D (mm) (5.8 W x 3.7 H x 1.3 D (in))	65 W x 50 H x 36 D (mm) (2.6 W x 2.0 H x 1.4 D (in))
Weight	140 g (4.9 oz)	140 g (4.9 oz)	380 g (13.4 oz)	120 g (4.2 oz)
Quality Assurance & Certifications	3-Point NIST®/UKAS® traceable Certificate of Calibration; FCC; CE	3-Point NIST®/UKAS® traceable Certificate of Calibration; FCC; CE	3-Point NIST®/UKAS® traceable Certificate of Calibration; FCC; CE	3-Point NIST®/UKAS® traceable Certificate of Calibration; FCC; CE

Device Output Power			
	Network Controller	Network Repeater	Standard Wireless Sensor
Output Power	200mW	1,000mW	10mW

Sensitech Inc. is focused on delivering supply chain visibility solutions that track, monitor and protect products for global leaders in the food, life sciences, consumer goods, and industrial markets. Our solutions are focused in three key areas: quality and compliance, supply chain security, and logistics performance management. Quality and compliance solutions address temperature-sensitive, complex supply chains focused on delivering the highest quality possible, while our supply chain security solutions help to mitigate risks associated with theft, diversion and chain of custody. Sensitech's logistics performance solutions deliver origin-to-destination, real-time transparency to any in-transit journey. Sensitech Inc. is an ISO 9001:2015 company, headquartered in Beverly, Mass., with over 35 sales, service and distribution locations around the world. Sensitech is a Carrier company, a leading provider of heating, air conditioning and refrigeration systems, building controls and automation, and fire and security systems leading to safer, smarter, sustainable and high-performance buildings. Unless otherwise indicated, all trademarks and service marks are the property of Sensitech Inc. Visit www.sensitech.com for additional information. ©2020 Carrier. All Rights Reserved. NIST is a registered trademark of The National Institute of Standards and Technology Agency of the United States Government. UKAS is a registered trademark of the United Kingdom Accreditation Service.

Sensitech Inc. • Global Headquarters • 800 Cummings Center • Suite 258X • Beverly, MA 01915-6197
1-800-843-8367 • +1-978-927-7033 • Fax: +1-978-921-2112 • clientservices@sensitech.com