



SensiWatch®

ANALYST ON DEMAND



A key goal at Sensitech® is to help our customers prevent cargo theft within their supply chain. Our Global Supply Chain Intelligence Team collects data and reports monthly on cargo theft incidents, along with insights into changing risk environments. This knowledge provides our subscribers with actionable information to help them proactively plan processes and procedures to mitigate risks associated with cargo theft.

Now—with Sensitech's Analyst on Demand service—these same professional, cargo-security analysts are at your disposal to create custom reports and analyses specific to your business utilizing Sensitech's intelligence data.

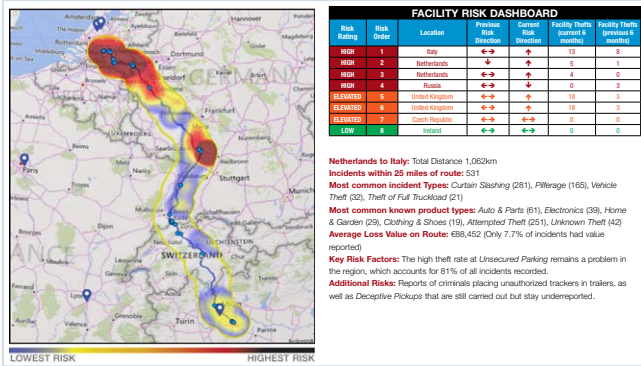
Analyst on Demand

The Sensitech Supply Chain Intelligence Center (SCIC) offers an Analyst-on-Demand program with access to the industry's largest global intelligence database. Combining professional analysis with insight and data, helps customers continually optimize and mitigate risk within their supply chain.

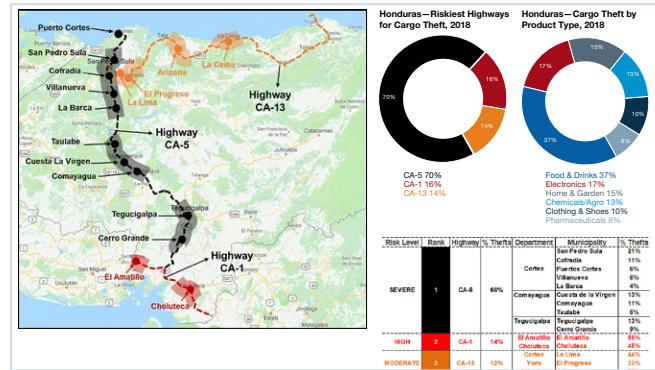
Plus, the Analyst on Demand service provides real-time disruption alerts for up to 50 defined and fixed global locations. Imagine setting up 20-mile geofences around each of your locations, and receiving a real-time alert if there are weather, traffic, crime issues or natural/man-made disasters occurring.

Augment your staff for route risk analyses, basic logistics and theft intelligence updates, heat maps, etc. Analyst on Demand service delivers customized, up-to-the-minute visual reports to help subscribers optimize their risk mitigation plans.

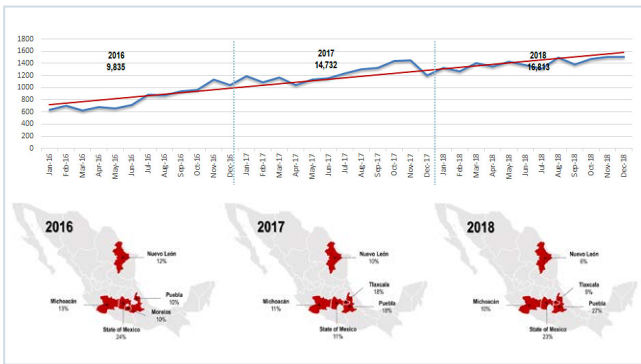
- Real-time disruption alerts via email or text
- Route Risk Assessments
- Global Heat Maps
- Quarterly Cargo Crime Briefing (global or regional)



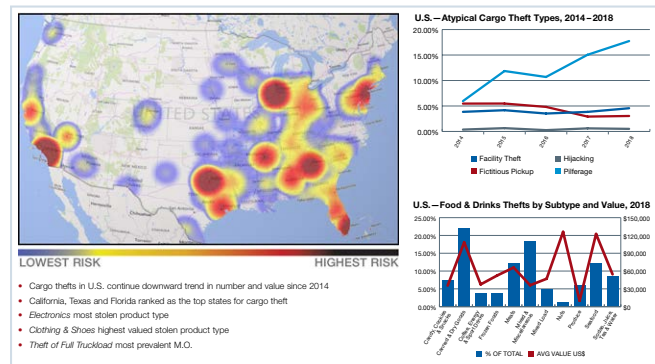
Customized Route Risk Assessments with Location Risk Ratings



Route Risk Assessments with Criminal MO and Targeted Commodities

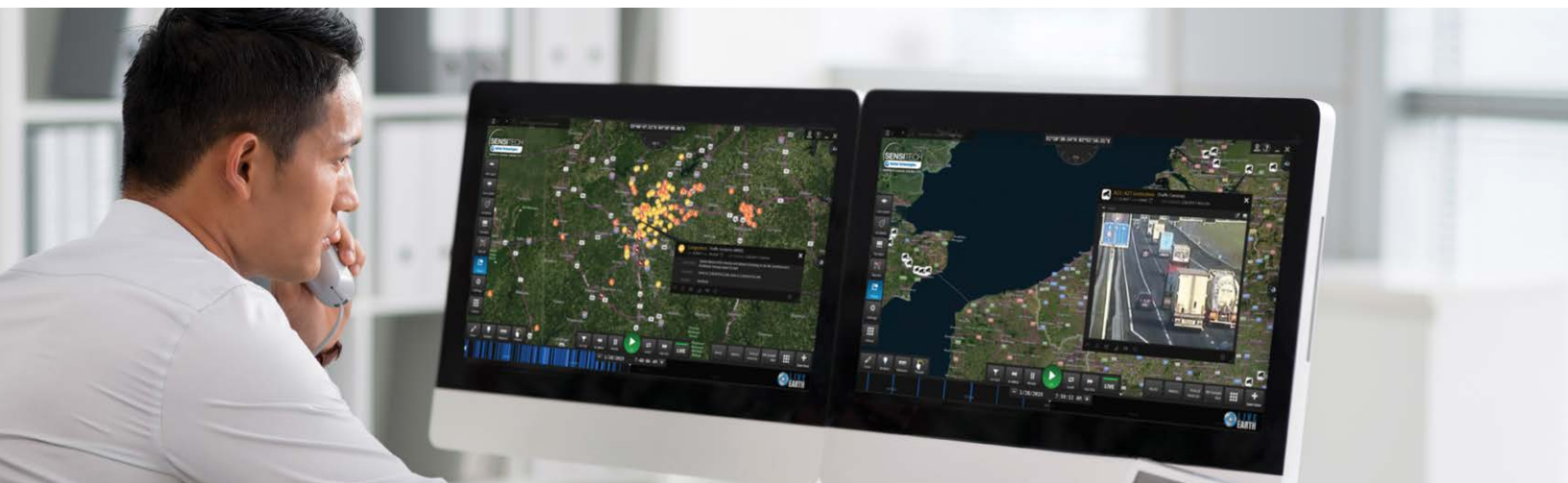


Cargo Theft Trending Year Over Year



Heat Maps with Cargo Crime Analysis and Trending

The landscape of global supply chain risk is constantly evolving. Sensitech’s Supply Chain Intelligence Center continually monitors these shifts and trends worldwide—and we make this information available through regular bulletins, and monthly/quarterly geographically focused reports. See Sensitech.com/en/intelligence for more information.



Sensitech Inc. is a global leader in delivering supply chain visibility solutions. Our innovative monitoring products and services help to maintain the quality, integrity and security of our customers’ valuable products at every step in their journey, all around the world. For 30 years, leading companies in the food, pharmaceutical, industrial, consumer goods and other industries have relied on Sensitech to help protect their products—and their bottom lines. Unless otherwise indicated, all trademarks and service marks are the property of Sensitech Inc. Visit www.sensitech.com for additional information. ©2021 Carrier. All Rights Reserved.

Sensitech Inc. • Global Headquarters • 800 Cummings Center • Suite 258X • Beverly, MA 01915-6197
 1-800-843-8367 • +1-978-927-7033 • Fax: +1-978-921-2112 • sensitech.clientservices@carrier.com