



SensiGuard®

ANALYST ON DEMAND



A key goal at Sensitech® is to help our customers prevent cargo theft within their supply chain. Our Global Supply Chain Intelligence Team collects data and reports monthly on cargo theft incidents, along with insights into changing risk environments. This knowledge provides our subscribers with actionable information to help them proactively plan processes and procedures to mitigate risks associated with cargo theft.

Now—with Sensitech's Analyst on Demand service—these same professional, cargo-security analysts are at your disposal to create custom reports and analyses specific to your business utilizing Sensitech's intelligence data.

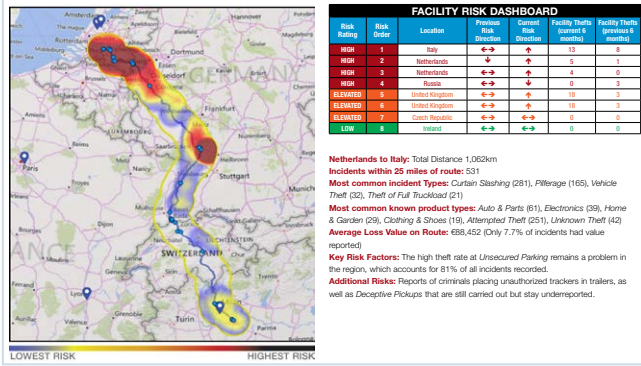
Analyst on Demand

The Sensitech® Supply Chain Intelligence Center (SCIC) offers an Analyst-on-Demand program with access to the industry's largest global intelligence database. Combining professional analysis with insight and data, helps customers continually optimize and mitigate risk within their supply chain.

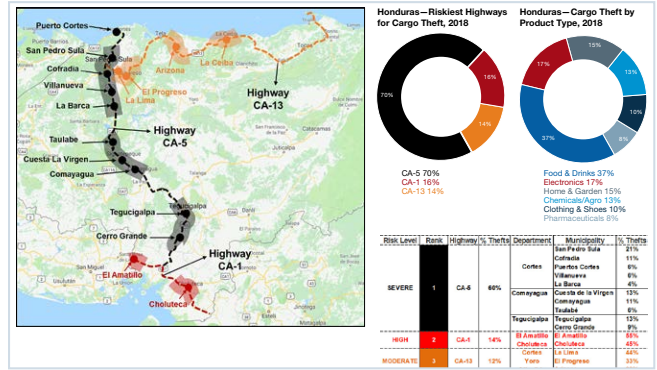
Plus, the Analyst on Demand service provides real-time disruption alerts for up to 50 defined and fixed global locations. Imagine setting up 20-mile geo-fences around each of your locations, and receiving a real-time alert if there are weather, traffic, crime issues or natural/man-made disasters occurring.

Augment your staff for route risk analyses, basic logistics and theft intelligence updates, heat maps, etc. Analyst on Demand service delivers customized, up-to-the-minute visual reports to help subscribers optimize their risk mitigation plans.

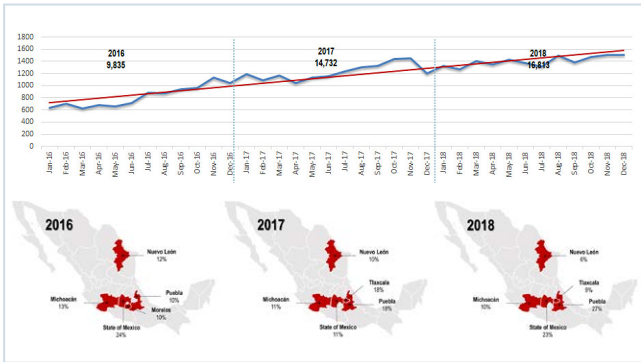
- Real-time disruption alerts via email or text
- Route Risk Assessments
- Global Heat Maps
- Quarterly Cargo Crime Briefing (global or regional)



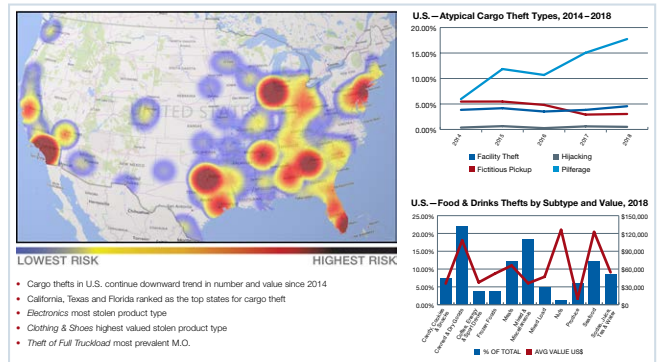
Customized Route Risk Assessments with Location Risk Ratings



Route Risk Assessments with Criminal MO and Targeted Commodities

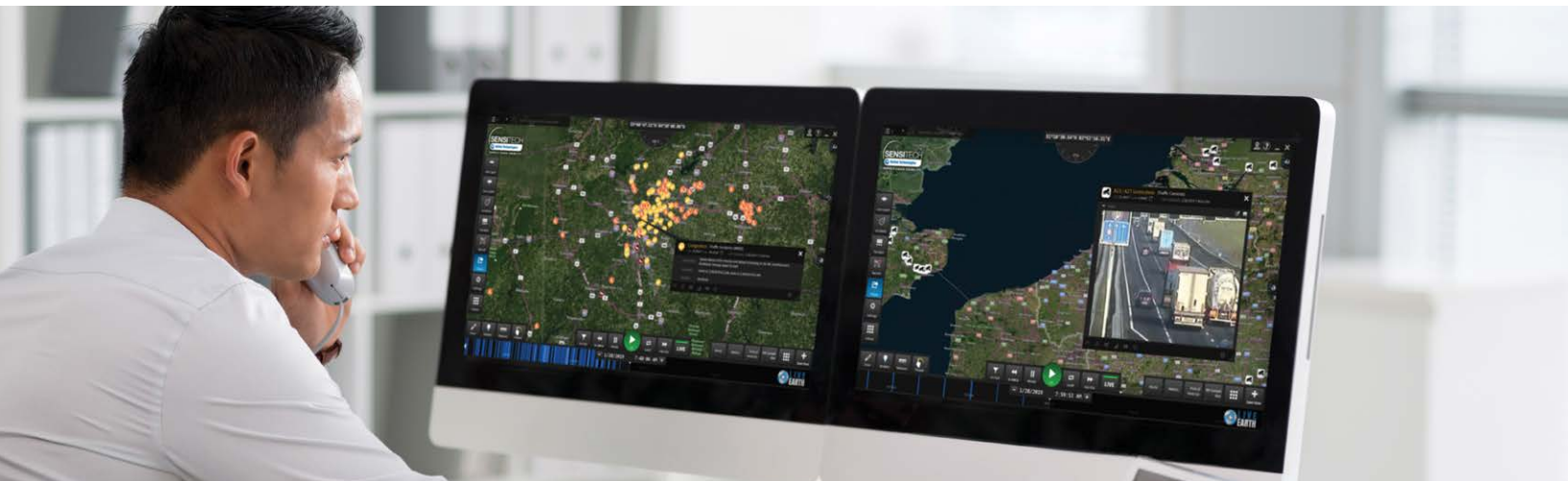


Cargo Theft Trending Year Over Year



Heat Maps with Cargo Crime Analysis and Trending

The landscape of global supply chain risk is constantly evolving. Sensitech’s Supply Chain Intelligence Center continually monitors these shifts and trends worldwide—and we make this information available through regular bulletins, and monthly/quarterly geographically focused reports. See <http://intelligence.sensitech.com/> for more information.



Sensitech Inc. is focused on delivering supply chain visibility solutions that track, monitor and protect products for global leaders in the food, life sciences, consumer goods, and industrial markets. Our solutions are focused in three key areas: quality and compliance, supply chain security, and logistics performance management. Quality and compliance solutions address temperature-sensitive, complex supply chains focused on delivering the highest quality possible, while our supply chain security solutions help to mitigate risks associated with theft, diversion and chain of custody. Sensitech’s logistics performance solutions deliver origin-to-destination, real-time transparency to any in-transit journey. Sensitech Inc. is an ISO 9001:2015 company, headquartered in Beverly, Mass., with over 35 sales, service and distribution locations around the world. Sensitech is a Carrier company, a leading provider of heating, air conditioning and refrigeration systems, building controls and automation, and fire and security systems leading to safer, smarter, sustainable and high-performance buildings. Unless otherwise indicated, all trademarks and service marks are the property of Sensitech Inc. Visit www.sensitech.com for additional information. ©2020 Carrier. All Rights Reserved.

Sensitech Inc. • Global Headquarters • 800 Cummings Center • Suite 258X • Beverly, MA 01915-6197
1-800-843-8367 • +1-978-927-7033 • Fax: +1-978-921-2112 • sensitech.clientservices@carrier.com