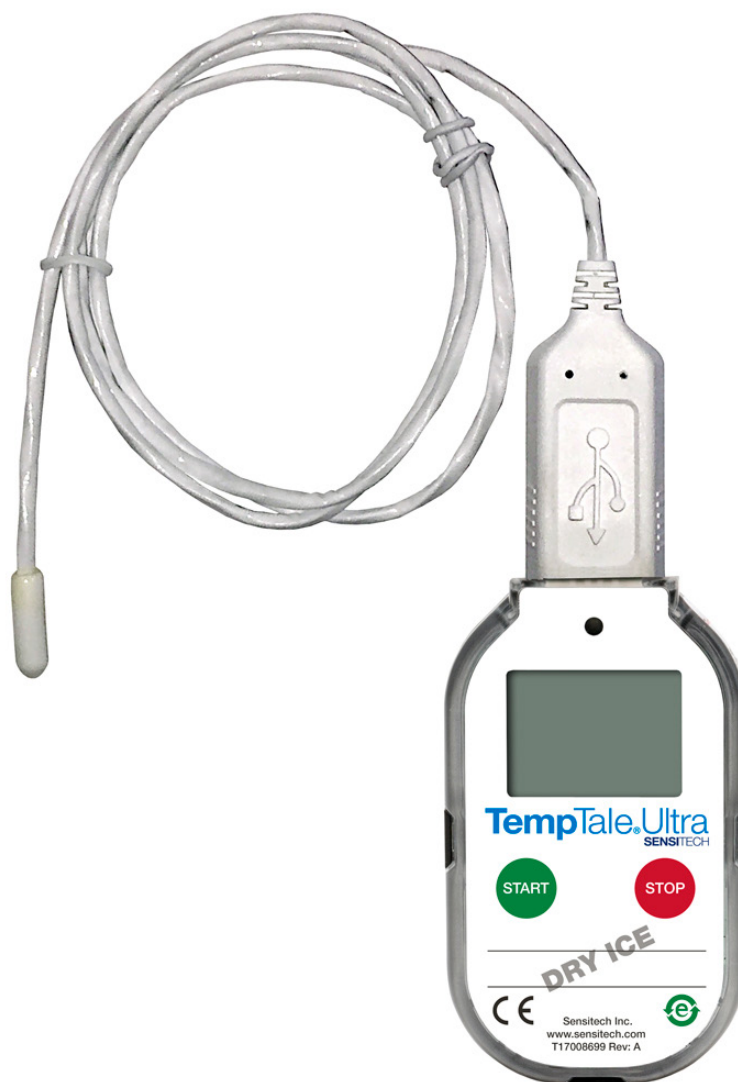


TempTale® Ultra Dry Ice Probe Temperature Monitor

Instructions for Use



sensitech.com



Sensitech Inc. Global Headquarters • 800 Cummings Center, Suite 258X • Beverly, MA 01915-6197

+1-800-843-8367 • +1-978-927-7033 • Fax 978-921-2112 • sensitech.clientservices@carrier.com

© 2020 Carrier. All Rights Reserved.




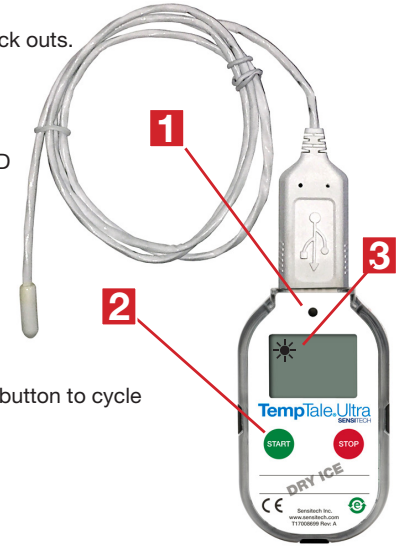
A Carrier Company

T83006669 Rev. C • 28 Oct 2020


The TempTale® Ultra Dry Ice Probe temperature monitor can be programmed with custom start-up delays, measurement intervals, and time-temperature alarm settings.

Starting a TempTale® Ultra Dry Ice Probe Monitor




- Prepare your container for shipment according to your Standard Operating Procedure (SOP) for dry ice pack outs.
- **Make sure the serial numbers on the probe and monitor match.** The **GREEN LED (1)** verifies the correct match.
- Place the probe of the TempTale Ultra monitor as close to your product as possible.
NOTE: keep the monitor's electronic housing away from the dry ice environment.
- Press and hold the **START button (2)** for 1 – 3 seconds until the Sunshine icon  **(3)** appears on the LCD screen. The LED will blink **GREEN** (if LED startup option was programmed) to indicate that the monitor has started.
- The TempTale Ultra will begin to record temperature data after the programmed start-up delay period has passed.



Marking an Event and Reading Data on the LCD Screen


- To mark an event while the monitor is recording, press and release the Start button. An Arrow  icon will appear briefly in the top of the LCD screen and trip summary data will appear. Press and release the Start button to cycle through the trip summary data. Data appears in the following order:
 1. Average temperature (AVG)
 2. Min. temperature recorded (MIN)
 3. Max. temperature recorded (MAX)
 4. Total time above high limit (▲ day/hr/min)
 5. Total time below low limit (▼ day/hr/min)
 6. Current temperature reading (This is a programmable option.)

Alarming

When the TempTale Ultra Dry Ice Probe monitor is exposed to temperatures outside the programmed alarm limits, an  will appear at the top of the screen. The  icon will display if the high alarm was triggered. The  icon will display if the low alarm was triggered.

Stopping and Receiving a TempTale Ultra Dry Ice Probe Monitor

To stop a TempTale Ultra Dry Ice Probe monitor:

- Press and hold the **STOP button** (1 – 3 seconds) until the Stop icon  appears in the upper right corner of the screen.
NOTE: If the monitor is not stopped manually, it will continue to record data until the programmed trip length is reached.
- Disconnect the probe from the monitor by grasping the monitor in one hand and base of the probe with the other hand. Gently twist and pull them apart.
- **Remember to keep the monitor's electronic housing away from the dry ice environment.**

Retrieving TempTale Ultra Dry Ice Probe Monitor Reports and Data Files

- After the monitor is stopped and the probe is disconnected, plug the monitor into a USB port on the computer. The LED will blink **RED** while the Adobe® PDF report and TTV data file are being created. When the **RED LED** stops blinking and displays solid **GREEN**, the file generation process is complete. The files are now accessible on a removable drive (Windows® 7, 8.1, and 10).
NOTE: Do not disconnect the monitor from the USB port while the **RED LED** is blinking.

Managing and Viewing TempTale Ultra Monitor Files

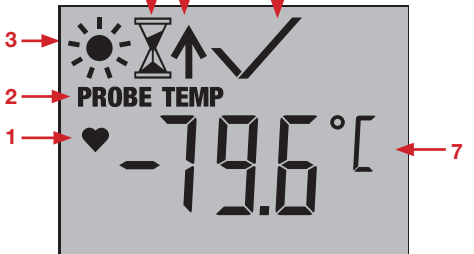
- If the computer has Adobe PDF compatible reader software installed, double-click the PDF file icon to open and view the PDF file.
- If the computer has Sensitech's TempTale Manager® Desktop Software installed (8.0 or higher), double-click the TTV file icon to open and view trip summary statistics and the time-temperature graph.
- Both the PDF and TTV files can be copied, saved, or emailed as an attachment.

Direct USB Printing of PDF Reports

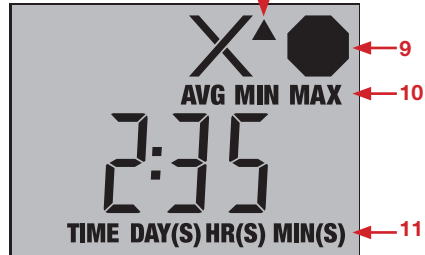
- To place the monitor in Direct Print mode, press and hold the Start and Stop buttons simultaneously until the **RED LED** starts blinking. The monitor is now in Direct Print mode.
NOTE: Direct Print mode times out after approximately 10 seconds. If time out occurs before the monitor is connected to a USB port, repeat the previous step.
- While the LED is blinking, plug the monitor into the USB port located on the exterior of a USB-enabled printer, and then print the PDF report.
NOTE: Not all USB printers support USB-direct printing of PDF documents. Consult your printer's user manual for support.

Displayed Information

Sample running display, no alarm



Sample stopped display, with alarm



<ol style="list-style-type: none"> 1. Ready to start 2. Probe indicator Steady = connected, flashing = disconnected 3. Running 4. Start-up delay 5. Marked point 6. Alarm Status X = alarm(s), ✓ = no alarm(s) 7. Current temperature display (preprogrammed to display °C or °F) 8. Alarm triggered ▲ HIGH / ▼ LOW 9. Stopped recording 10. Avg/Min/Max temperatures recorded 11. Total time above/below alarm limits; press Start button to cycle by day/hour/minute
