



TempTale® GEO Eagle

TempTale® GEO Eagle Suite of Real-Time Temperature Monitors

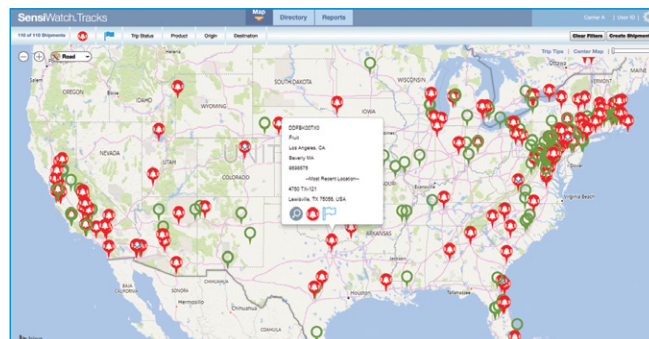
Global Real Time Quality & Compliance Solution

High-value industrial materials are complex commodities when it comes to maintaining quality. Yet shipping products from the manufacturer to the customer is often hidden behind the transportation screen, and completely out of both the shipper and receiver's control. Change is here.

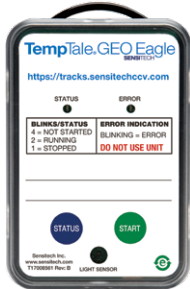
Sensitech Inc. introduces the TempTale® GEO Eagle suite of dataloggers: cost-effective, real-time, temperature monitors that transmit time, temperature, and location data back to the shipper. Easy to integrate into any shipment protocol; simply initiate a shipment, start the monitor, position it inside the load, and forget it—actionable data is automatically transmitted to email or text messaging, or just a serial number entry away. Save in-transit loads. Understand route performance; reduce rejected loads and product loss.

Key Features and Benefits

- Simple activation; easily integrates into shipper's protocol
- Tactile button initiation gives clear LED direction for monitor status
- Light sensor for evidence of door opening, and possible temperature compromise
- Supports temperature accuracy to $\pm 0.5^{\circ}\text{C}$
- Simply initiate a shipment, start the monitor, place it on a load and view shipment condition via serial number look up
- 90 day battery shelf life supports localized inventory management
- No-worry returns; recycling encouraged, yet no penalties for unreturned monitors
- Track shipments via SensiWatch™ Tracks at <https://tracks.sensitechccv.com>, a web-based portal designed to enable viewing shipment data privately or publicly through serial number view; shipment originators determine who sees what
- Trip details viewed via map display that includes detailed temperature data



TempTale® GEO Eagle



TempTale® GEO Eagle



TempTale® GEO Eagle Extended



TempTale® GEO Eagle 3G

Technical Information		
TempTale® GEO Eagle	TempTale® GEO Eagle Extended	TempTale® GEO Eagle 3G
Sensor Types: Temperature, location, light		
Temperature Range	-20°C to +55°C (-4°F to +131°F)	-30°C to +55°C (-22°F to +131°F)
Temperature Accuracy	NIST® Traceable: ± 0.5°C from -10°C to +45°C (+14°F to +113°F) ± 1.0°C from -20°C to -10°C (-4°F to +14°F) ± 1.0°C from +45°C to +55°C (+113°F to +131°F)	NIST® Traceable: ± 0.5°C from -10°C to +45°C (+14°F to +113°F) ± 1.0°C from -30°C to -10°C (-22°F to +14°F) ± 1.0°C from +45°C to +55°C (+113°F to +131°F)
Environmental Rating: IP64		
Temperature Resolution: 0.1°		
Light Sensor: 0-400 lux		
Start Up Delay: Optional 5 minute to 12 hours, in 5 minute intervals		
Cellular	2G GSM/GPRS/EDGE Quad Band (850, 900, 1800, 1900 MHz)	3G/2G GSM/GPRS/EDGE Quad Band (850, 900, 1800, 1900 MHz); UMTS/HSPA+ Penta Band (800, 850, 900, 1900, 2100 MHz)
Location Method: Cellular		
Data Logger Memory Type: Non-volatile EEPROM		
Battery Type: High-capacity internal Lithium Metal battery		
Shelf Life: 90 days		
Trip Length Configuration Options: Shipment lengths supported down to -20°C (-4°F); Variable from 7 to 90 days		
Temperature Sampling Interval: Variable from 5 minutes to 2 hours; factory configurable		
Housing: UL 94-V0 flame retardant plastic		
Dimensions: 101 mm x 65 mm x 29 mm		
Weight	115g (4oz)	133.2g (4.7oz)
Certifications: FCC; CE; NOM; Anatel; PTCRB; RoHS; WEEE; IEC standard EN61000-4-2 Level 4, EN61000-6-3: 2007+A1:2011; EN61000-6-1:2007+A1:2007; RTCA/DO-160: Section 20 – RF Susceptibility (Radiated) – Category S and Section 21 – Emissions of RF (Radiated) – Category M and H.		
Device Interface: STATUS, START push buttons; STATUS, ERROR LEDs		
Real-time Software Interface: SensiWatch™ Tracks; Email or text (SMS) notifications		

Sensitech Inc. is focused on delivering supply chain visibility solutions that track, monitor and protect products for global leaders in the food, life sciences, consumer goods, and industrial markets. Our solutions are focused in three key areas: quality and compliance, supply chain security, and logistics performance management. Quality and compliance solutions address temperature-sensitive, complex supply chains focused on delivering the highest quality possible, while our supply chain security solutions help to mitigate risks associated with theft, diversion and chain of custody. Sensitech's logistics performance solutions deliver origin-to-destination, real-time transparency to any in-transit journey. Sensitech Inc. is an ISO 9001:2008 company, headquartered in Beverly, Mass., with more than 35 sales, service and distribution locations around the world. Sensitech is a part of UTC Climate, Controls & Security, a unit of United Technologies Corp., a leading provider to the aerospace and building systems industries worldwide. Visit www.sensitech.com for additional information. © 2018 Sensitech Inc. All Rights Reserved. Unless otherwise indicated, all trademarks and service marks are the property of Sensitech Inc. NIST is a registered trademark of The National Institute of Standards and Technology Agency of the United States Government.