



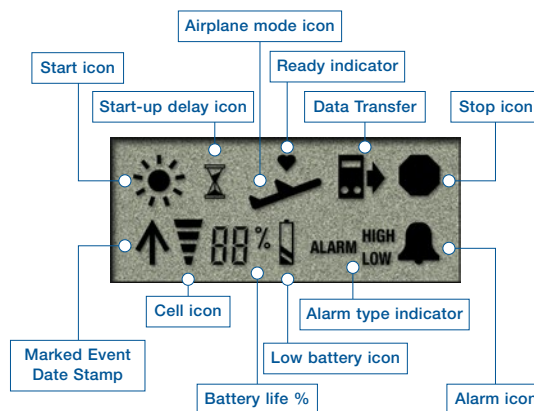
TempTale® GEO

Real-Time Visibility for Temperature & Location

Visibility—the relative ability to be seen under given conditions of distance, light, atmosphere, etc.—is now a competitive advantage in today’s complex supply chains. “Where is my cargo? And, what is its condition?” Regardless of where you sit—supplier, receiver or transportation provider—visibility is now a must have for logistics efficiency and quality assurance. TempTale® GEO delivers that competitive advantage, at an easy-to-implement and affordable cost.

TempTale® GEO Features and Benefits

- Provides real-time visibility for temperature and location to support both logistics and quality.
- Gives advance indication to all supply-chain partners where product is located and when it will arrive.
- Reduces risk by enabling active intervention to address correctable temperature deviations before they impact product quality.
- Allows data to be viewed in real time through a self-serve user interface—SensiWatch™ Tracks.
- Manages data in the same private cloud hosted environment as other TempTale® units, which facilitates a view of the entire perishable supply chain to drive sustainable improvements and regulatory compliance.
- Provides PDF reports and allows alternate data download into a secure database via USB.
- Ensures that no data gaps occur when the device travels through areas with no cellular coverage.



Intuitive LCD and LED indicators provide device status and alarm notification



TempTale® GEO Specifications				
Sensor Types	Temperature, Light			
Temperature Range for Storage	-20°C to 55°C (-4°F to 131°F)			
Temperature Measurement Range	-20°C to 55°C (-4°F to 131°F)			
Environmental Rating	IP64			
Temperature Accuracy Range	NIST® traceable:			
	Celsius		Fahrenheit	
	Range	Accuracy	Range	Accuracy
	-20°C to -10°C	±1°C	-4°F to 14°F	±1.8°F
	-10°C to 45°C	±0.5°C	14°F to 113°F	±0.9°F
45°C to 55°C	±1°C	113°F to 131°F	±1.8°F	
Temperature Resolution	0.1°C/F over full temperature measurement range			
Light Sensor	1-400 lux			
Temperature Measurement Responsiveness	Meets the requirements of USP 1118 and EN12830			
Cellular Communications	Global Quad-band GSM (850, 900, 1800, 1900 MHz), GPRS data			
Location Method	Cellular-based location			
Data Logger Memory Type	8k data points, Non-volatile EEPROM			
Programmable Data Logger Alarms	Maximum of 6 alarms using any combination of 4 alarm types			
Data Logger Alarm Types	High/low temperature limit; Single Temperature range; Dual Temperature range; Time-only			
Cold Chain PDF report	Internally generated and stored PDF report; can be downloaded/printed using USB port			
Battery Life/Type	High Capacity Internal Lithium Battery			
	<ul style="list-style-type: none"> • Shelf Life: 67 days; Operating: Minimum 7 days (15 minute reporting interval) • Shelf Life: 67 days; Operating: Minimum 14 days (30 minute reporting interval) • Longer intervals allow greater operating life up to 60 days 			
Temperature Sensor Sampling Interval	15 minutes to 2 hours, factory configurable			
Data Reporting Interval	15 minutes to 8 hours, factory configurable			
Operating Modes	Standard Run mode; Delayed Start Run mode; Airplane mode; Ocean Container mode			
Housing	UL 94-V0 flame retardant plastic, IP64			
Mechanical, Shock & Vibration	3000 lb (1360 kg) crush resistant			
Dimensions	3.25 in. x 6.25 in. x 1 in. (82 mm x 165 mm x 25 mm)			
Weight	0.75 lb (0.34 kg)			
Certifications	FCC, CE, RoHS, PTCRB, WEEE, DO160G, EN61000-4-2 Level 4, IEC62133, UN-38.3, EN61000-6-3, EN61000-6-1, EN60950-1; Incidental food contact per U.S. FDA 21 CFR Part 181.32			
Validation	Designed and manufactured to comply with 21 CFR part 11 and EU GDP			
Device Interface	Status LEDs; LCD; Push buttons; USB			
Real-Time Software Interface	SensiWatch™ Tracks Real-Time web-based application			
	<ul style="list-style-type: none"> • Shipment creation • Trip Information including departure and arrival times, origin and destination locations, carrier, PO, product type • Temperature alarms • Temperature statistics and history graph • Location information and history • Reports 			
	Email alarm notifications			
Compatible Software	TempTale Manager® Desktop (TTMD); ColdStream® Cold Chain Manager			

SensiWatch™ Tracks— Designed for Supply Chain Efficiency

Visibility begins when the shipment begins—the more information collected up-front about the shipment, the better the analysis will be at the conclusion of the shipment. This is an important fact for all parties involved—shippers, receivers, and logistics providers.

SensiWatch™ Tracks Features and Benefits

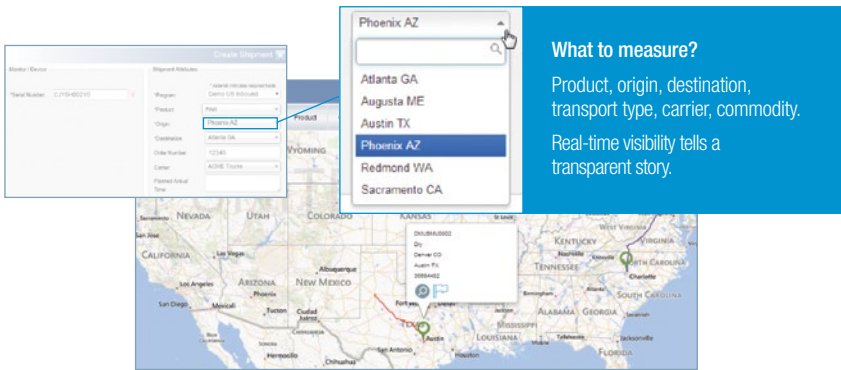
- View data in multiple ways to best suit your business needs:
 - Individual Trip Detail featuring shipment details, statistics, alarms, and a temperature graph.
 - Map View showing the location of in-transit devices with mouse-over capabilities for detail.
 - Directory View highlighting shipment attributes with status in a tabular format.
- Configurable condition status automatically triggers email notifications.

- Develop alarm configurations easily within SensiWatch™ Tracks: sensor excursion, departure/arrival, not moving, not transmitting, predicted late arrival; support for multiple alarm definitions per trip.
- Supports hassle-free software upgrades through a browser-based interface.
- Customized reports configurable by user:
 - Filter and group by product, origin, destination, carrier, date range.
 - View many trips in aggregate or drill down to single trip detail.
 - Compare temperature statistics among groups.
 - Rank performance by top ten key performance indicators (KPI).
 - Monitor changes in KPIs over time to spot trends.
 - Compare multiple temperature graphs.
 - Determine appropriate alarm sensitivity to avoid “alert fatigue.”

Map View

Overview of all in-transit shipments and their current status for the past seven days, updated in real time as new data is collected.


- Zoom in/out for ideal viewing.
- Filter view by product, origin, destination, alarm status.
- Click on any shipment to view trip details.
- Flag trips for reference.



What to measure?
Product, origin, destination, transport type, carrier, commodity.
Real-time visibility tells a transparent story.

Directory View

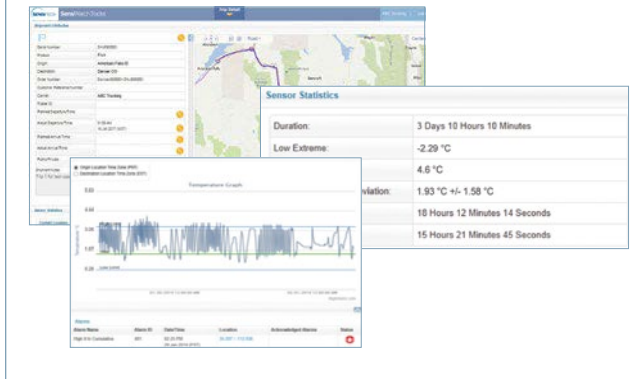
View shipment details in an easy-to-read tabular format. Filters applied in either Map View or Directory View are automatically populated to the other for consistency.



Trip Status	Shipment Status	Serial Number	Product	Origin	Destination	Order Number	Carrier	Actual Departure Time	Planned Arrival Time	Actual Arrival Time
In-Transit	In-Transit	IN070001	Phoenix-AZ	Phoenix-AZ	San Jose, CA	101	J&B Trucking			
In-Transit	In-Transit	IN070002	Latvia	Phoenix-AZ	Porter, AL	IN070002	Arma Transport			
In-Transit	In-Transit	IN070003	Latvia	Phoenix-AZ	Atlanta, GA	101	J&B Trucking		23 Jun 2017 (AET)	
In-Transit	In-Transit	IN070004	San Jose, CA	San Jose, CA	San Jose, CA	101	J&B Trucking			
In-Transit	In-Transit	IN070005	Port	Amesbury, MA	Denver, CO	IN070005	J&B Trucking	03 Jun 2017 (AET)	03 Jun 2017 (AET)	
In-Transit	In-Transit	IN070006	Amesbury, MA	Amesbury, MA	Denver, CO	IN070006	J&B Trucking	03 Jun 2017 (AET)	03 Jun 2017 (AET)	
In-Transit	In-Transit	IN070007	Amesbury, MA	Amesbury, MA	Denver, CO	IN070007	J&B Trucking	03 Jun 2017 (AET)	03 Jun 2017 (AET)	
In-Transit	In-Transit	IN070008	Amesbury, MA	Amesbury, MA	Denver, CO	IN070008	J&B Trucking	03 Jun 2017 (AET)	03 Jun 2017 (AET)	
In-Transit	In-Transit	IN070009	Amesbury, MA	Amesbury, MA	Denver, CO	IN070009	J&B Trucking	03 Jun 2017 (AET)	03 Jun 2017 (AET)	
In-Transit	In-Transit	IN070010	Amesbury, MA	Amesbury, MA	Denver, CO	IN070010	J&B Trucking	03 Jun 2017 (AET)	03 Jun 2017 (AET)	
In-Transit	In-Transit	IN070011	Amesbury, MA	Amesbury, MA	Denver, CO	IN070011	J&B Trucking	03 Jun 2017 (AET)	03 Jun 2017 (AET)	
In-Transit	In-Transit	IN070012	Amesbury, MA	Amesbury, MA	Denver, CO	IN070012	J&B Trucking	03 Jun 2017 (AET)	03 Jun 2017 (AET)	
In-Transit	In-Transit	IN070013	Amesbury, MA	Amesbury, MA	Denver, CO	IN070013	J&B Trucking	03 Jun 2017 (AET)	03 Jun 2017 (AET)	
In-Transit	In-Transit	IN070014	Amesbury, MA	Amesbury, MA	Denver, CO	IN070014	J&B Trucking	03 Jun 2017 (AET)	03 Jun 2017 (AET)	
In-Transit	In-Transit	IN070015	Amesbury, MA	Amesbury, MA	Denver, CO	IN070015	J&B Trucking	03 Jun 2017 (AET)	03 Jun 2017 (AET)	
In-Transit	In-Transit	IN070016	Amesbury, MA	Amesbury, MA	Denver, CO	IN070016	J&B Trucking	03 Jun 2017 (AET)	03 Jun 2017 (AET)	
In-Transit	In-Transit	IN070017	Amesbury, MA	Amesbury, MA	Denver, CO	IN070017	J&B Trucking	03 Jun 2017 (AET)	03 Jun 2017 (AET)	
In-Transit	In-Transit	IN070018	Amesbury, MA	Amesbury, MA	Denver, CO	IN070018	J&B Trucking	03 Jun 2017 (AET)	03 Jun 2017 (AET)	
In-Transit	In-Transit	IN070019	Amesbury, MA	Amesbury, MA	Denver, CO	IN070019	J&B Trucking	03 Jun 2017 (AET)	03 Jun 2017 (AET)	
In-Transit	In-Transit	IN070020	Amesbury, MA	Amesbury, MA	Denver, CO	IN070020	J&B Trucking	03 Jun 2017 (AET)	03 Jun 2017 (AET)	

Trip Detail Screen

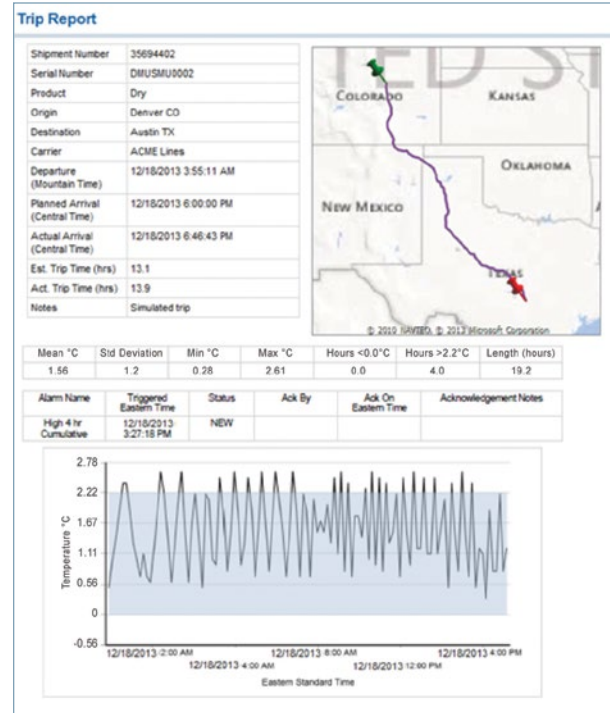
Provides complete detail on shipment attributes, sensor statistics, temperature information graph, and alarm notifications.



Email Notifications

Subject line identifies shipment number and status (departed, late, sensor excursion, arrived) for quick information updates.

Email notification includes complete trip detail including shipment attributes and status information.



Sensitech Inc. is focused on delivering supply chain visibility solutions that track, monitor and protect products for global leaders in the food, life sciences, consumer goods, and industrial markets. Our solutions are focused in three key areas: quality and compliance, supply chain security, and logistics performance management. Quality and compliance solutions address temperature-sensitive, complex supply chains focused on delivering the highest quality possible, while our supply chain security solutions help to mitigate risks associated with theft, diversion and chain of custody. Sensitech's logistics performance solutions deliver origin-to-destination, real-time transparency to any in-transit journey. Sensitech Inc. is an ISO 9001:2015 company, headquartered in Beverly, Mass., with over 35 sales, service and distribution locations around the world. Sensitech is a Carrier company, a leading provider of heating, air conditioning and refrigeration systems, building controls and automation, and fire and security systems leading to safer, smarter, sustainable and high-performance buildings. Unless otherwise indicated, all trademarks and service marks are the property of Sensitech Inc. Visit www.sensitech.com for additional information. ©2020 Carrier. All Rights Reserved. NIST is a registered trademark of The National Institute of Standards and Technology Agency of the United States Government.

Sensitech Inc. • Global Headquarters • 800 Cummings Center • Suite 258X • Beverly, MA 01915-6197
 1-800-843-8367 • +1-978-927-7033 • Fax: +1-978-921-2112 • sensitech.clientservices@carrier.com