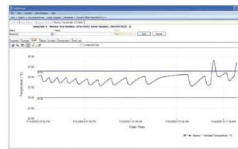


**Millions Depend on the Integrity of Your Product.  
Sensitech's Mission is to Ensure that Integrity.**

### The Tools That Turn Information Into Power



TempTale Manager®  
Desktop Software



Data Management Services



RF Monitoring



TempTale®4 Monitor



TempTale®4 USB Monitor



TagAlert® Indicator

## **TagAlert® Indicator Instructions For Use**

**For more information, contact our client services  
group at 800-843-8367.**



## Starting a TagAlert® Indicator

- Push the START button on the front of the device and hold for approximately 1 second.
- The LCD display will respond by displaying “OK” (Figure 1).
- Once the “OK” is displayed, the TagAlert® indicator has been activated and enters the start-up delay as programmed into the unit.
- Once activated, remove the back sticker label and affix to an instruction card or attach directly to a clean, dry surface of the product or package.



Figure 1

## Reading a TagAlert Indicator

- Once the package has arrived at its destination, remove the TagAlert indicator from the package.
- If the LCD displays “OK”, no alarms have been triggered during the trip (Figure 1).
- If the LCD displays black squares over the “OK” and the numbers 1, 2, 3 and/or 4, then an alarm has been triggered (Figure 2). For example, if the numbers 1 and 4 are displayed, then the 1st and 4th alarm conditions were exceeded.
- The receiving location should follow the appropriate protocol to determine product disposition if an alarm has triggered.



Figure 2

**NOTE:** If any numbers appear on the LCD, that alarm has triggered. The “OK” may still be visible through the black squares even if an alarm has triggered.

## Fail Safe Protection

- The TagAlert indicator performs a system check during operation and incorporates a Fail-Safe protection mode to alert the user should the unit fail to function properly.
- If the TagAlert indicator detects a faulty temperature sensor or the temperature exceeds the operational limits (70°C (158°F) to -20°C (-4°F)) in transit, the unit will enter into this mode and will discontinue temperature measurement.
- The LCD will display black squares over the “OK”. No numbers will be displayed on the LCD (Figure 3).



Figure 3

## AlarmAlert™ Feature

- If alarmed, the TagAlert indicator provides a mechanism to determine at which point during the trip the first alarm was triggered. This AlarmAlert™ feature can accommodate trips up to 10 days in duration.
- Read the TagAlert and record which alarms have triggered (Figure 2).
- Follow the next three steps to determine which alarm was triggered first and the approximate time at which the alarm triggered:
  1. Press the Start button to determine which alarm triggered first. The number representing the first alarm that triggered will flash for 4 seconds. The LCD display will then clear for 2 seconds.
  2. The sum of the numbers that appear next will equal the day into the trip that the first alarm was triggered (Figure 4). This will be displayed for 2 seconds.
  3. The sum of the numbers that appear next will indicate the 3-hour time interval within the day the first alarm was triggered (Figure 5).
- Press the Start button again to repeat sequence of information.

**NOTE:** Days are calculated in 24 hour increments. This begins when the start button is first pressed and the “OK” is displayed on the LCD.

Numbers Displayed on LCD	Sum = Day of Trip
1	1st
2	2nd
3	3rd
4	4th
4 and 1	5th
4 and 2	6th
4 and 3	7th
4 and 3 and 1	8th
4 and 3 and 2	9th
4 and 3 and 2 and 1	10th

Figure 4

Numbers Displayed on LCD	Sum Representing Time Interval	Time Interval in 24 Hour Period
1	1st	0 - 3rd hour
2	2nd	3rd - 6th hour
3	3rd	6th - 9th hour
4	4th	9th - 12th hour
4 and 1	5th	12th - 15th hour
4 and 2	6th	15th - 18th hour
4 and 3	7th	18th - 21th hour
4 and 3 and 1	8th	21 - 24th hour
4 and 3 and 2 and 1	10th	After 10th day

Figure 5