



TempTale®GEO

Fastest Path to Real-Time Visibility

Continuous visibility into your global supply chain through real-time monitoring delivers in-the-moment information that promotes proactive management of your cold chain.

Improve and Retain Quality

Real-time visibility provides insights into issues that may impact food quality, shelf life and safety

Proactively Intervene

Reduce rejections and waste with alerts to allow you to intervene and manage an issue as it occurs

Streamline Costs and Labor

Streamline tasks through automated monitoring and prioritizing your focus on problem shipments

Continuously Improve

Leverage data analytics to identify where issues are occurring, assess supply chain partners and predict to prevent issues

Gain Fast ROI

Real-time monitoring is easily implemented delivering immediate benefits with the first shipment

Easy-To-Implement

The TempTale® GEO suite of real-time monitors and the SensiWatch™ Platform software provide easy to implement solutions that produce real-time global supply chain visibility.



1. Place

Place a TempTale GEO monitor on each shipment leveraging existing cold chain best practices



2. Track

Through SensiWatch Platform track and receive alerts while product is in-transit to know where it is and in what condition



3. Analyze

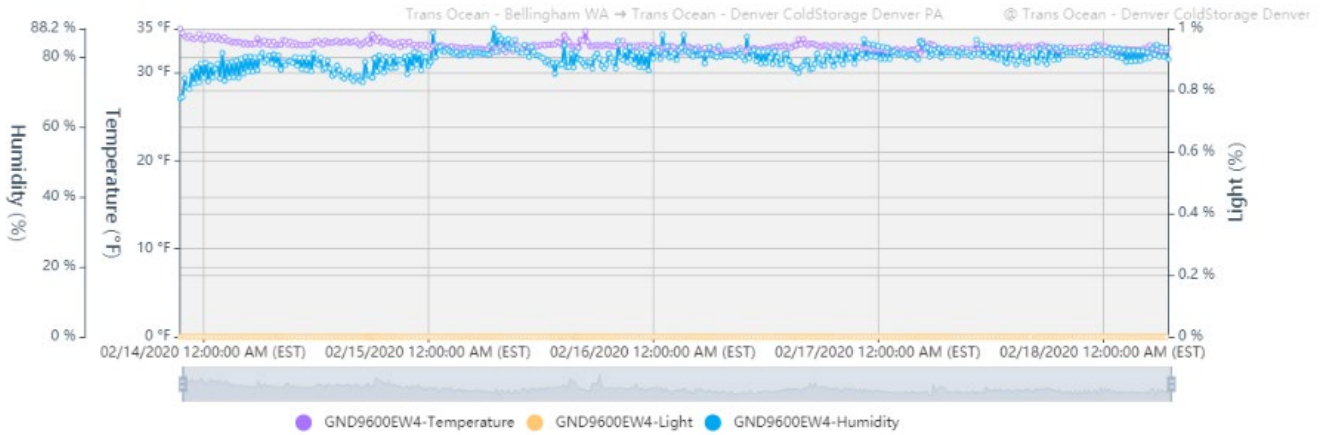
SensiWatch Platform's data insights and analytics help to uncover where issues are occurring and drive improvements

SensiWatch™ Platform

Powered by TempTale GEO Suite, the SensiWatch Platform provides visibility, alerts and analytics to help drive continuous improvements in your operations.



Sensor Graph



Regardless of global cellular connectivity requirements, Sensitech's TempTale GEO Suite provides an uninterrupted solution for the collection of critical cold chain data.

TempTale GEO Suite		
	TempTale GEO Eagle	TempTale GEO LTE
Sensor types	Location, temperature, light	Location, temperature, light and humidity
Cellular coverage (location)	2G and 3G	CAT-M1 with 2G fallback
Temperature range	-30°C to +55°C / -22°F to +131°F	-30°C to +55°C / -22°F to +131°F
Light range	1 – 400 lux	1 – 400 lux

Sensitech Inc. is focused on delivering supply chain visibility solutions that track, monitor and protect products for global leaders in the food, life sciences, consumer goods, and industrial markets. Our solutions are focused in three key areas: quality and compliance, supply chain security, and logistics performance management. Quality and compliance solutions address temperature-sensitive, complex supply chains focused on delivering the highest quality possible, while our supply chain security solutions help to mitigate risks associated with theft, diversion and chain of custody. Sensitech's logistics performance solutions deliver origin-to-destination, real-time transparency to any in-transit journey. Sensitech Inc. is an ISO 9001:2015 company, headquartered in Beverly, Mass., with over 35 sales, service and distribution locations around the world. Sensitech is a Carrier company, a leading provider of heating, air conditioning and refrigeration systems, building controls and automation, and fire and security systems leading to safer, smarter, sustainable and high-performance buildings. Visit www.sensitech.com for additional information. ©2020 Sensitech Inc. All Rights Reserved. Unless otherwise indicated, all trademarks and service marks are the property of Sensitech Inc. NIST is a registered trademark of The National Institute of Standards and Technology Agency of the United States Government.

Sensitech Inc. • Global Headquarters • 800 Cummings Center • Suite 258X • Beverly, MA 01915-6197
 1-800-843-8367 • +1-978-927-7033 • Fax: +1-978-921-2112 • clientservices@sensitech.com