



# VizComm™ Prime

## Precision Global Cargo Tracking Made Easy to Implement & Cost Effective

The VizComm™ Prime tracker is a global 3G cellular device that delivers outstanding performance at a reasonable price point. The unit is ideal for real-time tracking for security and logistics performance management. GSM/GPRS assisted GPS enables the VizComm Prime tracker to leverage location-position technology to augment GPS signals with cell-tower triangulation for real-time location accuracy—even in impaired environments, such as sealed trailers and shipping containers.

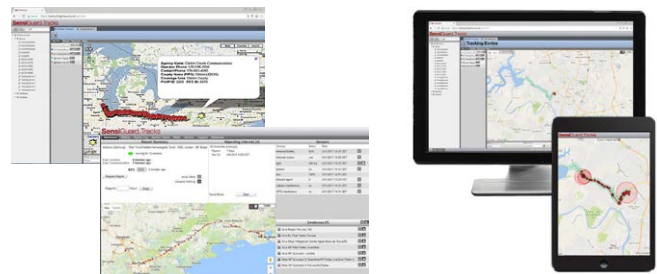
Precision and accuracy are key components for effective global cargo tracking. However, convenience is the key for strong compliance: easy-to-implement processes are the ones most often adopted and followed. Operational complexities can inhibit the rollout and adoption of a well-structured program. The single-use simplicity of the battery-powered VizComm Prime tracker, along with push-button initiation and an intuitive LCD viewer will help to ensure compliance across a global supply chain. Plus, the single-use model reduces customer inventory costs, and eliminates battery recharging, and ongoing maintenance. For longer shipments or those requiring more frequent reporting, the VizComm Prime Extended includes all the features of a standard VizComm Prime but double the battery capacity.

The VizComm Prime tracker is also equipped with sophisticated signal jamming countermeasures. The device has the ability to detect and respond to jamming attempts.

---

### Key Features and Benefits

- Real-time location tracking to support both logistics and security
- 3G cellular coverage with GSM/GPRS provides accurate location fixes globally
- Arrives fully configured and charged with simple push-button start for easy deployment
- Sensors detect temperature, light and motion supporting a variety of monitoring applications
- Broad and flexible configurations optimized for battery efficiency: temperature and light intensity for tamper detection; always on; scheduled hibernation; and wake up only when moving
- Ping on demand
- No-worry returns; recycling encouraged and supported
- Works in conjunction with a secure, web-based tracking application
- Jamming detection and countermeasures against signal jamming
- Available in an extended use model





## VizComm™ Prime Specifications

	VizComm Prime	VizComm Prime Extended
<b>Sensor Types</b>	Temperature, light, motion, jamming detection	
<b>Dimensions</b>	132.05mm H x 148.07mm W x 25.2mm D	170.05mm H x 148.41mm W x 26.72mm D
<b>Weight</b>	15.2 ounces	23.3 ounces
<b>Battery</b>	10.4Ahr	20.8Ahr
<b>Environmental Rating</b>	IP64	
<b>Light Sensor Sensitivity</b>	0-400 lux	
<b>Housing Material</b>	UL 940-V0 flame retardant plastic	
<b>Cellular Frequency Bands</b>	GSM/GPRS/EDGE: Quad band 850/900/1800/1900MHz UMTS/HSPA+: Five band 800/850/900/1900/2100MHz	
<b>Battery Type</b>	High-capacity internal Li-Ion battery	
<b>Operating Temperature</b>	-15°C to +55°C	
<b>Storage Temperature</b>	-20°C to +60°C	
<b>Temperature Sensor Range</b>	-15°C to +55°C	
<b>GNSS Constellations</b>	GPS, GLONASS	
<b>Certifications</b>	FCC; CE; RoHS; PTCRB; RTCA/DO-160G; EN61000-6-3:2007+A1:2011; EN61000-6-1:2007+A1:2007; EN60950-1 2nd Ed.; IEC62133; UN-38.3; GHOST	
<b>Device Interface</b>	Start and Stop buttons, LCD status screen	

Sensitech Inc. is focused on delivering supply chain visibility solutions that track, monitor and protect products for global leaders in the food, life sciences, consumer goods, and industrial markets. Our solutions are focused in three key areas: quality and compliance, supply chain security, and logistics performance management. Quality and compliance solutions address temperature-sensitive, complex supply chains focused on delivering the highest quality possible, while our supply chain security solutions help to mitigate risks associated with theft, diversion and chain of custody. Sensitech's logistics performance solutions deliver origin-to-destination, real-time transparency to any in-transit journey. Sensitech Inc. is an ISO 9001:2015 company, headquartered in Beverly, Mass., with over 35 sales, service and distribution locations around the world. Sensitech is a Carrier company, a leading provider of heating, air conditioning and refrigeration systems, building controls and automation, and fire and security systems leading to safer, smarter, sustainable and high-performance buildings. Visit [www.sensitech.com](http://www.sensitech.com) for additional information. ©2020 Sensitech Inc. All Rights Reserved. Unless otherwise indicated, all trademarks and service marks are the property of Sensitech Inc.

Sensitech Inc. • Global Headquarters • 800 Cummings Center • Suite 258X • Beverly, MA 01915-6197  
1-800-843-8367 • +1-978-927-7033 • Fax: +1-978-921-2112 • [clientservices@sensitech.com](mailto:clientservices@sensitech.com)