

# VizComm™ View

## VizComm™ View 2G, VizComm™ View Extended and VizComm™ View 3G

### Real-Time IoT Sensor Technology for Global Supply Chain Visibility

Comprehensive supply chain visibility is now available without the hassle of complex implementation and without the purchasing of specialty equipment. The suite of VizComm™ View trackers provide in-transit real-time location and condition, while monitoring for risk and measuring the performance of logistics partners. Real-time alerting enables proactive responses to cargo delays and in-transit disruptions, thereby reducing business risks and driving logistics efficiency.

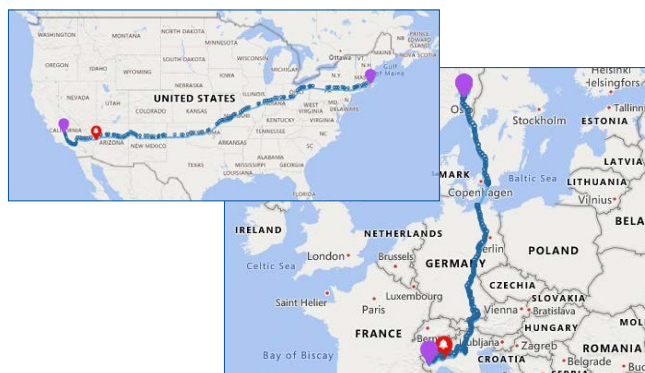
The VizComm View cargo trackers are battery-powered, pre-configured and ready-to-use straight out of the box. The devices are a low-cost, single-use design that eliminate the need to purchase and maintain a fleet of tracking devices. The single-use approach simplifies reverse logistics since the devices can be recycled after the shipment is complete. The sensor data easily integrates with existing systems and processes—no integration is required to get immediate transparency. Visibility programs can be up and start running in a matter of days, not weeks or months.

VizComm View devices are applied to cargo at shipping sites much like a label is applied during the packing and staging process. The tracker travels with the cargo throughout the entire journey providing real time status updates during the journey, with no added operational complexity or integration required. Cellular coverage is global to support complex intermodal, multimodal and cross border shipments.

### Key Features and Benefits

- Easy single-button start, with no charging or configuration required
- Real-time location and tracker updates via cellular network
- Global cellular coverage
- Light sensor for evidence of box or door opening
- Temperature sensor
- Optimized for placement on or within cargo
- Single-use model with no-worry returns; recycling encouraged and supported

- Integrates with existing systems and processes as needed
- Fully compatible with all versions of Sensitech's mobile and web-based tracking and monitoring platforms



# VizComm™ View



VizComm View 2G



VizComm View Extended



VizComm View 3G

	VizComm View 2G	VizComm View Extended	VizComm View 3G
<b>Shipment Duration</b>	7 to 90 days, based on monitor and reporting intervals		
<b>Modes of Transportation</b>	Road, Rail, Ocean		
<b>Sensor Types</b>	Temperature, Location, Light		
<b>Temperature Range</b>	-20°C to +55°C (-4°F to +131°F)	-30°C to +55°C (-22°F to +131°F)	
<b>Cellular</b>	2G GSM/GPRS/EDGE Quad Band (850, 900, 1800, 1900 MHz)		3G/2G GSM/GPRS/EDGE Quad Band (850, 900, 1800, 1900 MHz); UMTS/HSPA+ Penta Band (800, 850, 900, 1900, 2100 MHz)
<b>Light Range</b>	0-400 lux, measuring 0-100%		
<b>Certifications</b>	FCC; CE; NOM; Anatel; PTCRB; RoHS; WEEE; IEC standard EN61000-4-2 Level 4, EN61000-6-3: 2007+A1: 2011; EN61000-6-1 2007+A1:2007; RTCA/DO-160: Section 20 – RF Susceptibility (Radiated) – Category S and Section 21 – Emissions of RF (Radiated) –Category M and H		
<b>Battery Type</b>	Lithium		
<b>Dimensions</b>	101 mm x 65 mm x 29 mm		
<b>Weight(s)</b>	115g/4oz	133.2g/4.7oz	138.9g/4.9oz
<b>Environmental Rating</b>	IP64		
<b>Housing</b>	UL94-V0 flame retardant plastic		
<b>Display Indicators</b>	LED lights indicate Start, Stop, Status		

Sensitech Inc. is a global leader in delivering supply chain visibility solutions. Our innovative monitoring products and services help to maintain the quality, integrity and security of our customers' valuable products at every step in their journey, all around the world. For 30 years, leading companies in the food, pharmaceutical, industrial, consumer goods and other industries have relied on Sensitech to help protect their products—and their bottom lines. Unless otherwise indicated, all trademarks and service marks are the property of Sensitech Inc. Visit [www.sensitech.com](http://www.sensitech.com) for additional information. ©2021 Carrier. All Rights Reserved.

Sensitech Inc. • Global Headquarters • 800 Cummings Center • Suite 258X • Beverly, MA 01915-6197  
 1-800-843-8367 • +1-978-927-7033 • Fax: +1-978-921-2112 • [sensitech.clientservices@carrier.com](mailto:sensitech.clientservices@carrier.com)