



VizComm™ View

VizComm™ View Sensor Suite

Real-Time Covert Tracking for Global Supply Chain Visibility

Comprehensive real-time tracking is now available without the hassle of complex deployment. The suite of VizComm™ View trackers are efficient in performance and easy to implement. These robust trackers deliver rich visibility into every link of the supply chain. Real-time alerting enables proactive responses to cargo delays and in-transit disruptions, thereby reducing business risks and driving logistics efficiency.

Sensitech Inc. introduces a comprehensive line of VizComm View variants to solve complex problems around the globe. The single-use VizComm View trackers are battery-powered and priced right to be cost effective for tracking every shipment for security and logistics performance purposes.

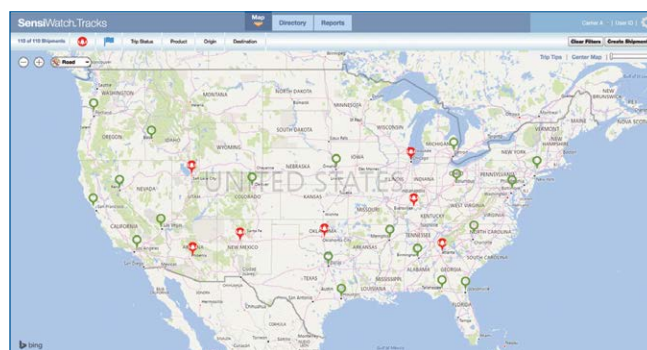
Trackers are applied at distribution centers, contract manufacturing sites and 3PL locations—much like a label would be applied during the packing and staging process. The device travels with the cargo through the entire journey, with no added requirements at the shipping or receiving dock. The trackers require no capital expense, ongoing maintenance or configuration. Simply order pre-configured trackers for your shipments in the same way you order shipping labels and boxes.

Avoid disruptions caused by careless handoffs and transfers in real-time globally.

The VizComm View family of trackers deliver comprehensive 2G and 3G cellular performance and global reach, making them ideal for cross-border solutions and for geographies where communication services may be impaired.

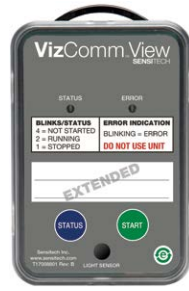
Key Features and Benefits

- Arrives fully configured and charged, with push-button start for **easy deployment**
- **Real-time location tracking** to support both logistics and security
- Data collected can be aggregated to create reports providing a **holistic view of your supply chain**
- Global communication coverage helps to assure feedback **anywhere in the world**
- **Light sensor** for evidence of box or door opening
- **Reduced footprint** makes it easy to place and conceal
- Automated location **alerts** for reporting on demand
- No-worry returns; **recycling** encouraged and supported
- Works in conjunction with SensiWatch™ Tracks, a **secure web-based tracking** and monitoring platform





VizComm View



VizComm View Extended



VizComm View 3G

VizComm View Sensor Suite Specifications			
	VizComm View	VizComm View Extended	VizComm View 3G
Sensor Types	Temperature, Light		
Temperature Range	-20°C to +55°C (-4°F to +131°F)	-30°C to +55°C (-22°F to +131°F)	
Environmental Rating	IP64		
Light Sensor	0-400 lux		
Cellular Communications	2G - GSM/GPRS/EDGE Quad Band (850, 900, 1800, 1900 MHz)		3G/2G - GSM/GPRS/EDGE Quad Band (850, 900, 1800, 1900 MHz); UMTS/HSPA+ Penta Band (800, 850, 900, 1900, 2100 MHz)
Battery Type	High-capacity internal Lithium Metal battery		
Shelf Life	90 days		
Housing	UL 94-V0 flame retardant plastic		
Dimensions	101 mm x 65 mm x 29 mm		
Weight	115g (4oz)	133.2g (4.7oz)	138.9g (4.9oz)
Certifications	FCC; CE; NOM; Anatel; PTCRB; RoHS; WEEE; IEC standard EN61000-4-2 Level 4, EN61000-6-3: 2007+A1:2011; EN61000-6-1:2007+A1:2007; RTCA/DO-160: Section 20 – RF Susceptibility (Radiated) – Category S and Section 21 – Emissions of RF (Radiated) – Category M and H		
Device Interface	STATUS, START push buttons; STATUS, ERROR LEDs		
Real-time Software Interface	SensiWatch™ Tracks; SensiGuard® Tracks; Email notifications		

Sensitech Inc. is focused on delivering supply chain visibility solutions that track, monitor and protect products for global leaders in the food, life sciences, consumer goods, and industrial markets. Our solutions are focused in three key areas: quality and compliance, supply chain security, and logistics performance management. Quality and compliance solutions address temperature-sensitive, complex supply chains focused on delivering the highest quality possible, while our supply chain security solutions help to mitigate risks associated with theft, diversion and chain of custody. Sensitech's logistics performance solutions deliver origin-to-destination, real-time transparency to any in-transit journey. Sensitech Inc. is an ISO 9001:2015 company, headquartered in Beverly, Mass., with over 35 sales, service and distribution locations around the world. Sensitech is a Carrier company, a leading provider of heating, air conditioning and refrigeration systems, building controls and automation, and fire and security systems leading to safer, smarter, sustainable and high-performance buildings. Visit www.sensitech.com for additional information. ©2020 Sensitech Inc. All Rights Reserved. Unless otherwise indicated, all trademarks and service marks are the property of Sensitech Inc.

Sensitech Inc. • Global Headquarters • 800 Cummings Center • Suite 258X • Beverly, MA 01915-6197
 1-800-843-8367 • +1-978-927-7033 • Fax: +1-978-921-2112 • clientservices@sensitech.com