



VizComm™ View

VizComm™ View LTE Extended and VizComm™ View Ultra

Next Generation Real-Time IoT Sensor Technology—4G/5G Coverage Air Carrier Approved

The latest addition to the Vizcomm™ View cargo tracking suite utilize CAT-M1 technology found in many 4G and 5G cellular networks. The CAT-M1 standard is part of the emerging LPWA (Low-Power, Wide-Area) standard that enhances coverage while optimizing battery efficiency. The VizComm View Ultra is also approved for use tracking air shipments where cellular transmission is paused while the shipment is in the flight.

The suite of VizComm View trackers provide in-transit real-time location and condition, while monitoring for risk and measuring the performance of logistics partners. Real-time alerting enables proactive responses to cargo delays and in-transit disruptions, thereby reducing business risks and driving logistics efficiency.

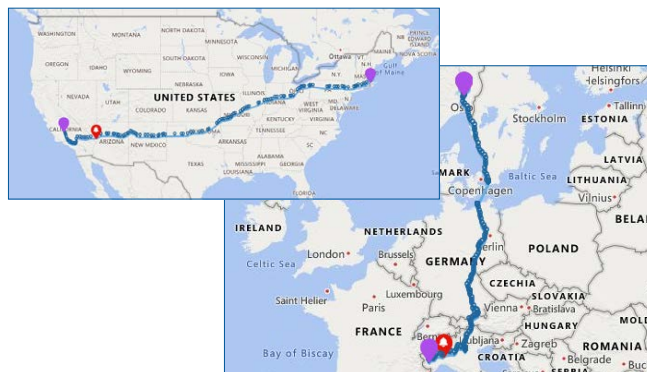
The VizComm View cargo trackers are battery-powered, pre-configured and ready-to-use straight out of the box. The devices are a low-cost, single-use design that eliminates the need to purchase and maintain a fleet of tracking devices. The single-use approach simplifies reverse logistics since the devices can simply be recycled after the shipment is complete. The sensor data easily integrates with existing systems and processes—no integration is required to get immediate transparency. Visibility programs can be up and running in a matter of days, not weeks or months.

VizComm View devices are applied to cargo at shipping sites much like a label is applied during the packing and staging process. The tracker travels with the cargo over the entire journey providing real time status updates throughout the journey, with no added operational complexity or integration required. Cellular coverage is global to support complex intermodal, multimodal and cross border shipments.

Key Features and Benefits

- Easy single button start, with no charging or configuration required
- Real-time location and tracker updates via cellular network
- Global cellular coverage with CAT-M1 coverage (typically included with 4G and 5G networks)
- Devices fall back to 2G cellular when CAT-M1 is not available
- Light sensor for evidence of box or door opening
- Temperature and humidity sensors
- Optimized for placement on or within cargo
- Single-use model with no-worry returns; recycling encouraged and supported

- Integrates with existing systems and processes as needed
- Fully compatible with all versions of Sensitech's mobile and web-based tracking and monitoring platforms



VizComm™ View



VizComm View LTE Extended



VizComm View Ultra

	VizComm View LTE Extended	VizComm View Ultra
Shipment Duration	7 to 90 days, based on monitor and reporting intervals	
Modes of Transportation	Road, Rail, Ocean	Air, Road, Rail, Ocean
Sensor Types	Temperature, Location, Humidity, Light	
Temperature Range	-30°C to 55°C (-22°F to 131°F)	-10°C to 55°C (14°F to 131°F)
Cellular	LTE Cat-M1 for 4G/5G networks with 2G fallback	
Light Range	0-400 lux, measuring 0-100%	
Humidity Range	10-100%	
Global Certifications	FCC; CE; NOM; Anatel; PTCRB; RoHS; WEEE; IEC standard EN61000-4-2 Level 4, EN61000-6-3: 2007+A1: 2011; EN61000-6-1 2007+A1:2007; RTCA/DO-160: Section 20 – RF Susceptibility (Radiated) – Category S and Section 21 – Emissions of RF (Radiated) – Category M and H	FCC; CE; NOM; Anatel; RoHS; WEEE; RTCA/DO-160
Battery Type	Lithium	Alkaline (non-replaceable)
Shelf Life	Up to 180 days shelf life	
Dimensions	121.5mm x 115.5mm x 25.5mm	
Weight(s)	207 grams	240 grams
Environmental Rating	IP64	
Housing	UL 94-V0 flame retardant plastic	
Display Indicators	LED lights indicate Start, Stop, Status	

Sensitech Inc. is a global leader in delivering supply chain visibility solutions. Our innovative monitoring products and services help to maintain the quality, integrity and security of our customers' valuable products at every step in their journey, all around the world. For 30 years, leading companies in the food, pharmaceutical, industrial, consumer goods and other industries have relied on Sensitech to help protect their products—and their bottom lines. Unless otherwise indicated, all trademarks and service marks are the property of Sensitech Inc. Visit www.sensitech.com for additional information. ©2021 Carrier. All Rights Reserved.

Sensitech Inc. • Global Headquarters • 800 Cummings Center • Suite 258X • Beverly, MA 01915-6197
 1-800-843-8367 • +1-978-927-7033 • Fax: +1-978-921-2112 • sensitech.clientservices@carrier.com