



VizComm™ View

VizComm™ View Sensor Suite

Real-Time IoT Sensor Technology for Global Supply Chain Visibility

Comprehensive supply chain visibility is now available without the hassle of complex implementation and without the purchasing specialty equipment. The suite of VizComm™ View trackers provide in-transit real-time location and condition, while monitoring for risk and measuring the performance of logistics partners. Real-time alerting enables proactive responses to cargo delays and in-transit disruptions, thereby reducing business risks and driving logistics efficiency.

The VizComm View trackers are battery-powered, pre-configured and ready-to-use straight out of the box. The devices are a low-cost, single-use design that eliminates the need to purchase and maintain a fleet of tracking devices. The single-use approach simplifies reverse logistics since the devices can simply be recycled after the shipment is complete. The sensor data easily integrates with existing systems and processes—no integration is required to get immediate transparency. Visibility programs can be up and running in a matter of days, not weeks or months.

Sensors are applied at distribution centers, contract manufacturing sites and 3PL locations—much like a label is applied during the packing and staging process. The sensor travels with the cargo through the entire journey, with no added requirements at the shipping or receiving dock. The devices require no capital expense, ongoing maintenance or configuration. Simply order pre-configured sensors for your shipments in the same way you order shipping labels and boxes.

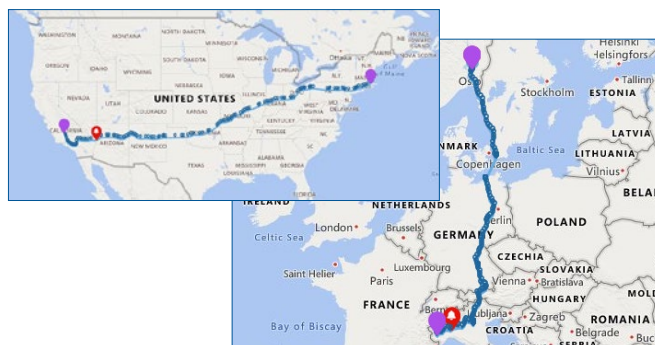
Avoid disruptions caused by careless handoffs and transfers in real-time globally.

The VizComm View family of devices delivers comprehensive 2G, 3G or LTE CAT-M1 cellular performance and global reach, making them ideal for cross-border solutions and for geographies where communication services may be impaired. The CAT-M1 standard is part of the emerging LPWA (Low-Power, Wide-Area) standard, and can be deployed in both 4G and 5G cellular networks as a leading IoT communication technology.

Key Features and Benefits

- Arrives fully configured and charged, with push-button start for easy deployment
- Real-time location and sensor updates via cellular network
- Options for 2G, 3G, and LTE CAT-M1 with 4G/5G networks
- Global communication coverage
- Light sensor for evidence of box or door opening
- Temperature sensor, humidity sensor on LTE version
- Reduced footprint for simple placement and concealment
- Single-use model with no-worry returns; recycling encouraged and supported

- Easily integrates with existing systems and processes as needed
- Fully compatible with all versions of Sensitech's mobile and web-based tracking and monitoring platforms



VizComm™ View



VizComm View



VizComm View Extended



VizComm View 3G



VizComm View LTE

VizComm™ View Sensor Suite Specifications

	VizComm View	VizComm View Extended	VizComm View 3G	VizComm View LTE
Sensor Types	Temperature, location, light			Temperature, location, humidity, light
Temperature Range	-20°C to +55°C (-4°F to +131°F)	-30°C to +55°C (-22°F to +131°F)		
Environmental Rating	IP64			
Light Sensor	0-400 lux			
Cellular Communications	2G - GSMGPRS/EDGE Quad Band (850, 900, 1800, 1900 MHz)		3G/2G - GSM/GPRS/EDGE Quad Band (850, 900, 1800, 1900 MHz); UMTS/HSPA+ Penta Band (800, 850, 900, 1900, 2100 MHz)	LTE Cat-M1 \ 2G
Battery Type	High-capacity internal Lithium Metal battery			
Housing	UL 94-V0 flame retardant plastic			
Dimensions	101mm x 65mm x 29mm			121.5mm x 115.5mm x 25.5mm
Weight	115g (4oz)	133.2g (4.7oz)	138.9g (4.9oz)	207g (7.3oz)

Sensitech Inc. is focused on delivering supply chain visibility solutions that track, monitor and protect products for global leaders in the food, life sciences, consumer goods, and industrial markets. Our solutions are focused in three key areas: quality and compliance, supply chain security, and logistics performance management. Quality and compliance solutions address temperature-sensitive, complex supply chains focused on delivering the highest quality possible, while our supply chain security solutions help to mitigate risks associated with theft, diversion and chain of custody. Sensitech's logistics performance solutions deliver origin-to-destination, real-time transparency to any in-transit journey. Sensitech Inc. is an ISO 9001:2015 company, headquartered in Beverly, Mass., with over 35 sales, service and distribution locations around the world. Sensitech is a Carrier company, a leading provider of heating, air conditioning and refrigeration systems, building controls and automation, and fire and security systems leading to safer, smarter, sustainable and high-performance buildings. Unless otherwise indicated, all trademarks and service marks are the property of Sensitech Inc. Visit www.sensitech.com for additional information. ©2020 Carrier. All Rights Reserved.

Sensitech Inc. • Global Headquarters • 800 Cummings Center • Suite 258X • Beverly, MA 01915-6197
1-800-843-8367 • +1-978-927-7033 • Fax: +1-978-921-2112 • sensitech.clientservices@carrier.com

sensitech.com



A Carrier Company

08/20

