



TempTale®GEO

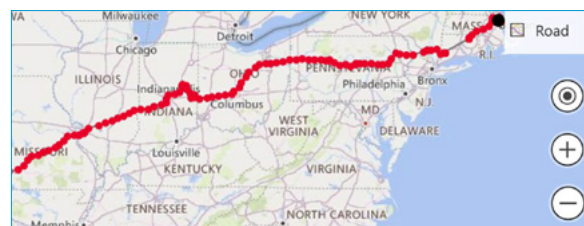
TempTale® GEO Ultra

Multimodal real-time IoT device including air shipments

As part of the next generation TempTale GEO Suite, the TempTale® GEO Ultra is a multimodal enabled real-time IoT device that delivers complete visibility in the perishable supply chain whether shipments are moving via air, road, rail or ocean. With specific airline approvals, the TempTale GEO Ultra can track shipments end-to-end, through each segment, to help retain product quality while in-transit. With condition and logistic alerts, proactive intervention can help save products, manage expectations and improve resiliency overall.

Advantages of the TempTale GEO Ultra:

- Multimodal, easy-to-implement, real-time solution tracks valuable products through the perishable supply chain
- Expansive airline approvals provide a large global network to support air shipments where you need them
- LTE Cat-M1 for 4G/5G networks with 2G fallback provides the best connectivity coverage
- Non-lithium battery shelf life up to 180 days
- Temperature range of -10°C to 55°C (14°F to 131°F)
- Humidity sensor range of 10-100% RH
- Light sensor measures 0-400 lux indicates if doors or cases are opened
- Takeback programs are available



Sensitech's 30 year history of delivering high-end technology is coupled with the most reliable and robust supply chain in the industry, with over 90% of orders fulfilled within 48 hours.

Proactively manage supply chain disruptions and save money with real-time visibility

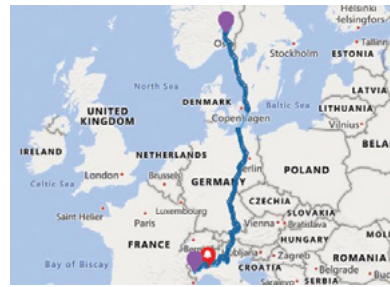
Improve on quality and safety compliance goals through continuous monitoring

Gain continuous supply chain improvements through data analytic insights

Streamline operations by knowing where to focus time and resources

TempTale® GEO Ultra

SensiWatch® Platform powered by TempTale® GEO monitoring suite, provides uninterrupted visibility with notifications and data analytics to help drive continuous improvements in your operations.



Regardless of global cellular connectivity requirements, Sensitech's TempTale GEO Suite provides an uninterrupted solution for the collection of critical cold chain data.

TempTale® GEO Ultra	
Device Uses	
Shipment Duration/Type	Single use for refrigerated shipments up to 30 days configurable based on reporting interval.
Modes of Transportation	Air, Road, Rail and Ocean
Sensor Types and Device Data	
Temperature	<p>Temperature Range: -10°C to 55°C (14°F to 131°F)</p> <p>Temperature Accuracy: NIST® Traceable ± 0.5°C for -10°C to 45°C (14°F to 113°F) ± 1.0°C for 45°C to 55°C (113°F to 131°F)</p>
Location (Cellular)	LTE Cat-M1 for 4G/5G networks with 2G fallback
Light Range	0-400 lux, measuring 0-100%
Humidity Range	10-100%
Device Memory	5,000 data point capacity per sensor
Device Physical Specifications and Certifications	
Global Certifications	FCC; CE; NOM; Anatel; PTCRB; RoHS; WEEE; IEC standard EN61000-4-2 Level 4, EN61000-6-3: 2007+A1: 2011; EN61000-6-1 2007+A1:2007; RTCA/DO-160: Section 20 – RF Susceptibility (Radiated) – Category S and Section 21 – Emissions of RF (Radiated) – Category M and H.
Airline Approvals	Ask your Sensitech Representative for the most current listing.
Battery Type/Shelf Life	Non-Lithium; up to 180 days shelf life
Dimensions	121.5mm x 115.5mm x 25.5mm
Weight	207 grams
Environmental Rating	IP64
Display Indicators	LED lights indicate start, stop and status

Sensitech Inc. is a global leader in delivering supply chain visibility solutions. Our innovative monitoring products and services help to maintain the quality, integrity and security of our customers' valuable products at every step in their journey, all around the world. For 30 years, leading companies in the food, pharmaceutical, industrial, consumer goods and other industries have relied on Sensitech to help protect their products—and their bottom lines. NIST is a registered trademark of The National Institute of Standards and Technology Agency of the United States Government. Unless otherwise indicated, all trademarks and service marks are the property of Sensitech Inc. Visit www.sensitech.com for additional information. ©2021 Carrier. All Rights Reserved.

Sensitech Inc. • Global Headquarters • 800 Cummings Center • Suite 258X • Beverly, MA 01915-6197
1-800-843-8367 • +1-978-927-7033 • Fax: +1-978-921-2112 • sensitech.clientservices@carrier.com