



TempTale® GEO Eagle

SensiWatch™ Tracks Real-Time Software with TempTale® GEO Eagle Monitors

Complete Real-Time Solution to Visualize, Manage and Improve Your Supply Chain

Manage quality and control of your products in-transit.

Manage quality and control of your food products while in-transit through Sensitech's complete real-time solution. You can get complete visibility into the state of your products while they are being transported to your customers.

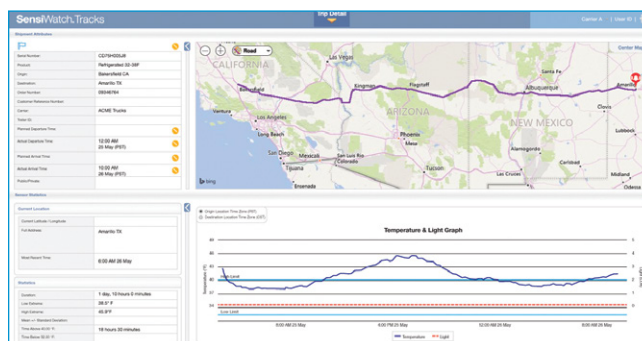
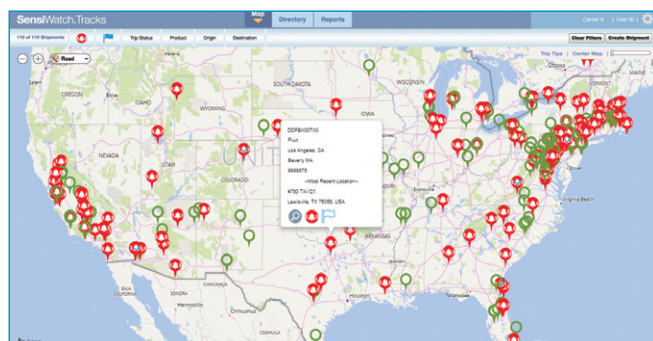
Simply initiate a shipment and place a TempTale® GEO Eagle monitor. Cloud-based SensiWatch™ Tracks will then start reporting location and temperature so you always know where your products are and in what condition. Automated alerts via text or email will let you know if your shipment is having any issues.

Improve customer satisfaction through insights.

By leveraging SensiWatch Tracks, you can gain insights into your route performance, help reduce rejections and product loss. Real-time data will provide information as events happen. Historical data will provide insights on supply chain routes, partners and general practices to help drive improvements.

Collaborate with supply chain partners.

You can send map and current location data to help collaborate with your network and customers when your products are in-transit. With alerts, you can work with supply chain partners to intervene if there are temperature excursions or to help manage expectations of your customers with late arrivals.



TempTale® GEO Eagle

TempTale GEO Eagle Monitor Suite

Industry leading real-time monitoring suite provides global location and temperature range coverage to provide a complete real-time solution.



TempTale® GEO Eagle

All fresh perishable food products.



TempTale® GEO Eagle Extended

Frozen seafood, meat, fruits, vegetables and frozen desserts. Fresh fruits and vegetables that have longer shipments.



TempTale® GEO Eagle 3G

For tracking cargo through locations with zero or inadequate 2G network coverage.

Technical Information			
	TempTale® GEO Eagle	TempTale® GEO Eagle Extended	TempTale® GEO Eagle 3G
Sensor Types	Temperature, location, light		
Battery Life	7 to 90 days, based on monitor and reporting intervals		
Dimensions	101 mm x 65 mm x 29 mm		
Weight(s)	115g/4oz	133.2g/4.7oz	138.9g/4.9oz
Housing	UL94-V0 flame retardant plastic; safe for incidental food contact		
Cellular	2G GSM/GPRS/EDGE Quad Band (850, 900, 1800, 1900 MHz)		3G/2G GSM/GPRS/EDGE Quad Band (850, 900, 1800, 1900 MHz); UMTS/HSPA+ Penta Band (800, 850, 900, 1900, 2100 MHz)
Temperature Range	-20°C to +55°C (-4°F to +131°F)	-30°C to +55°C (-22°F to +131°F)	
Temperature Accuracy	NIST® Traceable: ± 0.5°C from -10°C to +45°C (+14°F to +113°F) ± 1.0°C from -20°C to -10°C (-4°F to +14°F) ± 1.0°C from +45°C to +55°C (+113°F to +131°F)	NIST® Traceable: ± 0.5°C from -10°C to +45°C (+14°F to +113°F) ± 1.0°C from -30°C to -10°C (-22°F to +14°F) ± 1.0°C from +45°C to +55°C (+113°F to +131°F)	
Temperature Resolution	0.1°		
Light Sensor	0-400 lux		
Start Up Delay	Optional 5 minute to 12 hours, in 5 minute intervals		
Certifications	FCC; CE; NOM; Anatel; PTCRB; RoHS; WEEE; IEC standard EN61000-4-2 Level 4, EN61000-6-3: 2007+A1: 2011; EN61000-6-1 2007+A1:2007; RTCA/DO-160: Section 20 – RF Susceptibility (Radiated) – Category S and Section 21 – Emissions of RF (Radiated) – Category M and H.		

Sensitech Inc. is focused on delivering supply chain visibility solutions that track, monitor and protect products for global leaders in the food, life sciences, consumer goods, and industrial markets. Our solutions are focused in three key areas: quality and compliance, supply chain security, and logistics performance management. Quality and compliance solutions address temperature-sensitive, complex supply chains focused on delivering the highest quality possible, while our supply chain security solutions help to mitigate risks associated with theft, diversion and chain of custody. Sensitech's logistics performance solutions deliver origin-to-destination, real-time transparency to any in-transit journey. Sensitech Inc. is an ISO 9001:2008 company, headquartered in Beverly, Mass., with more than 35 sales, service and distribution locations around the world. Sensitech is a part of UTC Climate, Controls & Security, a unit of United Technologies Corp., a leading provider to the aerospace and building systems industries worldwide. Visit www.sensitech.com for additional information. © 2018 Sensitech Inc. All Rights Reserved. Unless otherwise indicated, all trademarks and service marks are the property of Sensitech Inc. NIST is a registered trademark of The National Institute of Standards and Technology Agency of the United States Government.