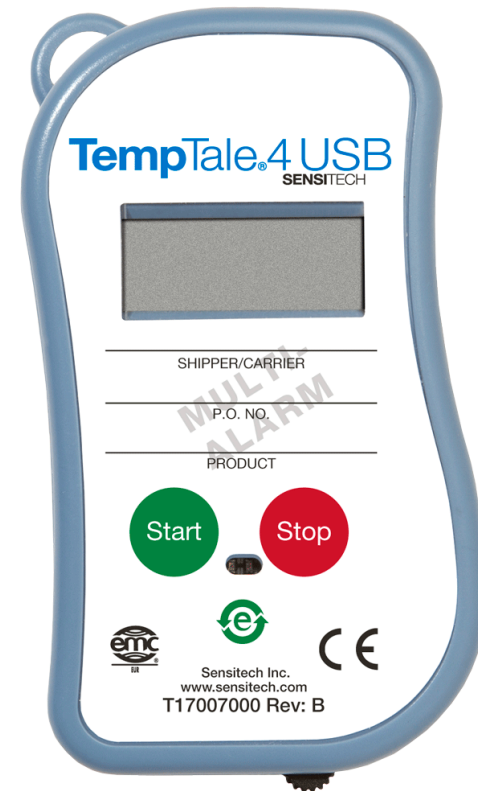


# TempTale<sup>®</sup>4 USB Multi-Alarm Monitor

## *Instructions for Use*



[sensitech.com](http://sensitech.com)



Sensitech Inc. • 800 Cummings Center, Suite 258X • Beverly, MA 01915-6197

+1-800-843-8367 • +1-978-927-7033 • Fax 978-921-2112 • [sensitech.clientservices@carrier.com](mailto:sensitech.clientservices@carrier.com)

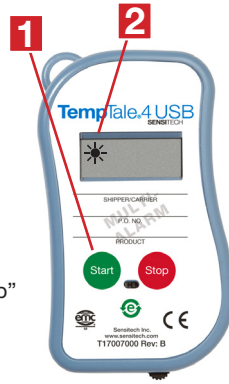
© 2020 Carrier. All Rights Reserved.

T83001870 Rev. D • 24 Sep 2020

All TempTale®4 USB Multi-Alarm (MA) monitors are programmed with a custom start-up delay, measurement interval and time-temperature alarm settings that have been pre-determined by the customer.

### Starting a TempTale®4 USB MA Monitor

- Press and hold the **green START** button (1) 1 – 3 seconds until the “Sun” icon ☀ appears in the upper left corner of the display (2).
- The TempTale 4 USB MA monitor will now begin to record data after the pre-programmed start-up delay period has passed.



### Marking an important event (“Date Stamp”)

- TempTale 4 USB MA monitors provide an option to “Date Stamp” or mark an important event at any time during the monitoring cycle. This mark will be visible as an arrow on the time-temperature graph and in **bold italics** when viewing the tabular data.
- To mark the data while the monitor is recording, press and release the **START** button. The “Arrow” ↑ icon will appear temporarily in the lower left corner and the temperature history information will appear on the display in the following order:
  - Time remaining/time elapsed before alarm triggers (configurable option)
  - Average temperature
  - Highest temperature recorded
  - Lowest temperature recorded
  - Alarm number(s) that triggered (configurable option)
  - Current Temp Reading (Last Temp Recorded configurable option)

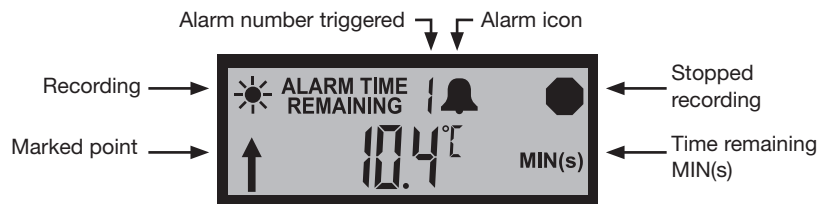
### Alarming

When the TempTale 4 USB MA is exposed to a temperature outside a pre-programmed time and temperature limit threshold, an “Alarm Bell” icon 🔔 or “X” (depending on which Alarm display option is configured) will appear at the top of the LCD window.

### Stopping a TempTale 4 USB MA Monitor

Press and hold (1 to 3 seconds) the **red STOP** button until the “Stop” icon ⬛ appears in the upper right corner of the display. Inserting the USB plug into a USB port on the computer will also stop the monitor.

### Displayed Information



### Receiving a TempTale 4 USB MA Monitor

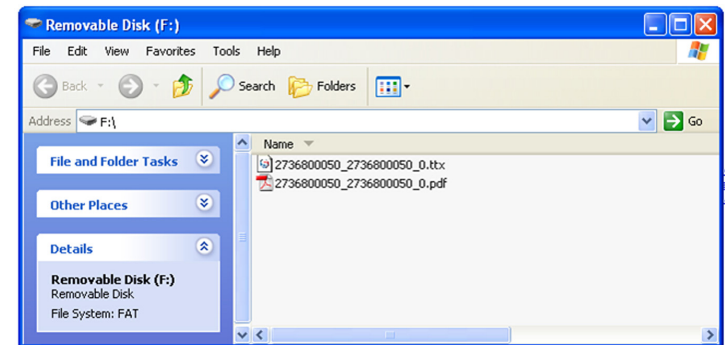
- Recover the TempTale 4 USB MA monitor, then press and hold the **STOP** button (1 – 3 seconds) to manually stop the unit. **NOTE:** If the monitor is not stopped manually, the TempTale 4 USB MA will continue to record data until the monitor is plugged into a USB port on the computer or until the pre-programmed trip length is exceeded.
- Verify the “Stop” icon ⬛ is visible on the display

### Retrieving TempTale 4 USB MA Monitor reports and data files

- Pull out the USB connector cable from the side of the TempTale 4 USB MA monitor and insert the plug into a USB port on the computer. The monitor will automatically begin creating the Adobe® PDF report and Sensitech .ttx data file within the monitor.
- After the LED on the face of the monitor glows solid **GREEN**, the monitor has completed the report and data file generation. The files are now accessible as files on a “removable drive” as shown below. (Windows XP and Vista).



**Note:** Do not remove the plug from the USB port on the computer until the LED on the face of the unit glows solid **GREEN**.



### Managing and Viewing TempTale 4 USB MA Monitor Files

- If the computer has Adobe PDF compatible reader software installed, the PDF report file containing the monitor information, summary statistics, and time-temperature data graph, can be opened and viewed by double clicking on the .PDF file icon.
- If the computer has Sensitech’s TempTale Manager® Desktop Software installed, the .TTV data file containing the monitor information and time-temperature data, can be opened and accessed by double clicking on the .TTV file icon.
- Both the PDF and .TTV files can be moved, copied, saved and/or attached to email as allowed by the computer operating system.