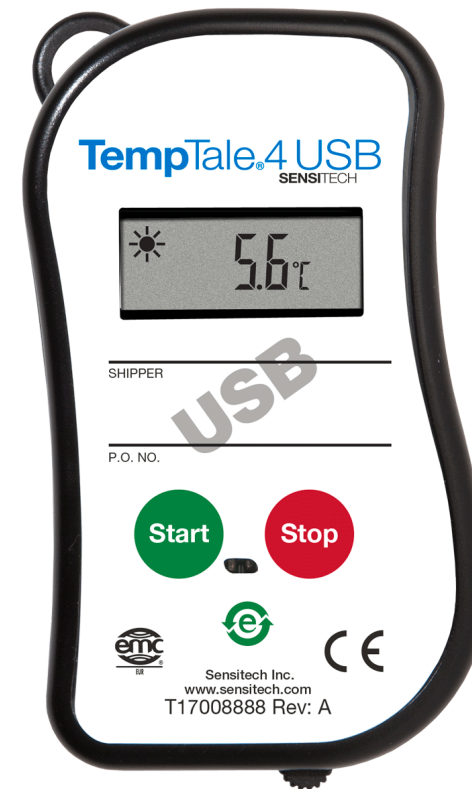


TempTale[®]4 USB Monitor

Instructions for Use



A Carrier Company



sensitech.com



Sensitech Inc. • 800 Cummings Center, Suite 258X • Beverly, MA 01915-6197

+1-800-843-8367 • +1-978-927-7033 • Fax 978-921-2112 • sensitech.clientservices@carrier.com

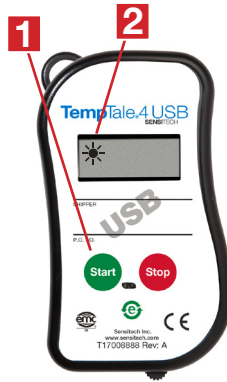
© 2020 Carrier. All Rights Reserved.

T83001600 Rev. D • 22 Sep 2020

All TempTale®4 USB monitors are programmed with a custom start-up delay, measurement interval and time-temperature alarm settings.

Starting a TempTale®4 USB Monitor

- Press and hold the **green START** button (1) 1 – 3 seconds until the “Sun” icon ☀ appears in the upper left corner of the display (2).
- The TempTale 4 USB will now begin to record data after the pre-programmed start-up delay period has passed.



Marking an important event (“Date Stamp”)

- TempTale 4 USB monitors provide an option to “Date Stamp” or mark an important event at any time during the monitoring cycle. This mark will be visible as an arrow on the time-temperature graph and in italics when viewing the tabular data.
- To mark the data while the monitor is recording, press and release the **START** button. The “Arrow” ↑ icon will appear temporarily in the lower left corner and the temperature history information will appear on the display in the following order:
 - Average temperature
 - Highest temperature recorded
 - Total time above high temperature limit
 - Lowest temperature recorded
 - Total time below low temperature limit

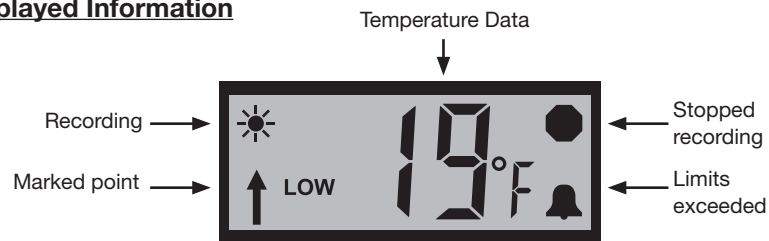
Alarming

When the TempTale 4 USB is exposed to a temperature outside a pre-programmed time and temperature limit threshold, an “Alarm Bell” icon 🔔 will appear in the lower right corner of the display.

Stopping a TempTale 4 USB Monitor

Press and hold (1 to 3 seconds) the **red STOP** button until the “Stop” ● icon appears in the upper right corner of the display. Inserting the USB plug into a USB port on the computer will also stop the monitor.

Displayed Information



Receiving a TempTale 4 USB Monitor

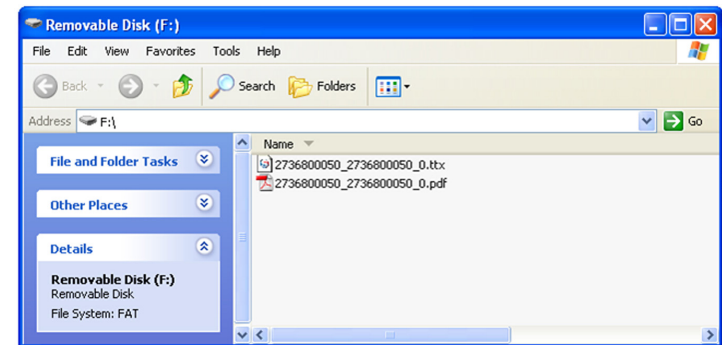
- Recover the TempTale 4 USB monitor, then press and hold the **STOP** button (1 – 3 seconds) to manually stop the unit. **NOTE:** If the monitor is not stopped manually, the TempTale 4 USB will continue to record data until the monitor is plugged into a USB port on the computer or until the pre-programmed trip length is exceeded.
- Verify the “Stop” icon ● is visible on the display

Retrieving TempTale 4 USB Monitor reports and data files

- Pull out the USB connector cable from the side of the TempTale 4 USB monitor and insert the plug into a USB port on the computer. The monitor will automatically begin creating the Adobe® PDF report and Sensitech .ttx data file within the monitor.
- After the LED on the face of the monitor glows solid **GREEN**, the monitor has completed the report and data file generation. The files are now accessible as files on a “removable drive” as shown below. (Windows XP and Vista).



Note: Do not remove the plug from the USB port on the computer until the LED on the face of the unit glows solid **GREEN**.



Managing and Viewing TempTale 4 USB Monitor Files

- If the computer has Adobe PDF compatible reader software installed, the PDF report file containing the monitor information, summary statistics, and time-temperature data graph, can be opened and viewed by double clicking on the .pdf file icon.
- If the computer has Sensitech’s TempTale Manager® Desktop Software installed, the .ttx data file containing the monitor information and time-temperature data, can be opened and accessed by double clicking on the .ttx file icon.
- Both the PDF and .ttx files can be moved, copied, saved and/or attached to email as allowed by the computer operating system.